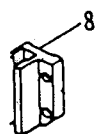


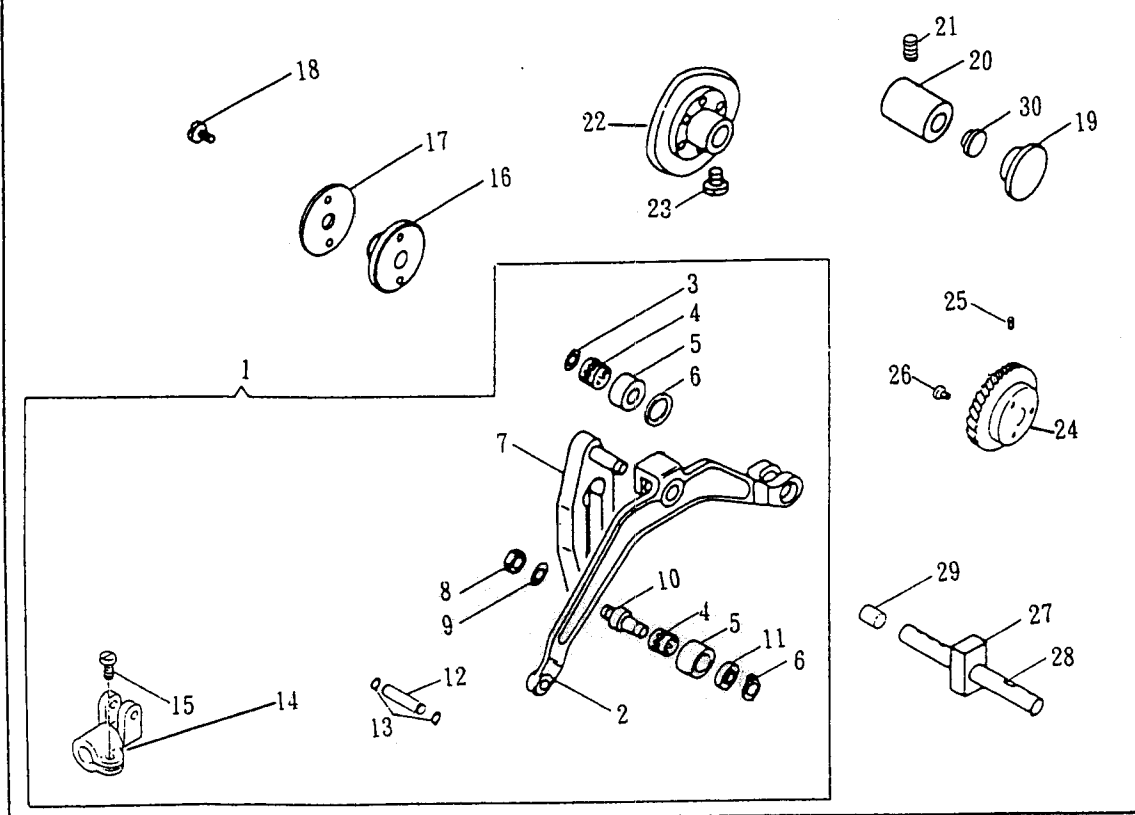
7



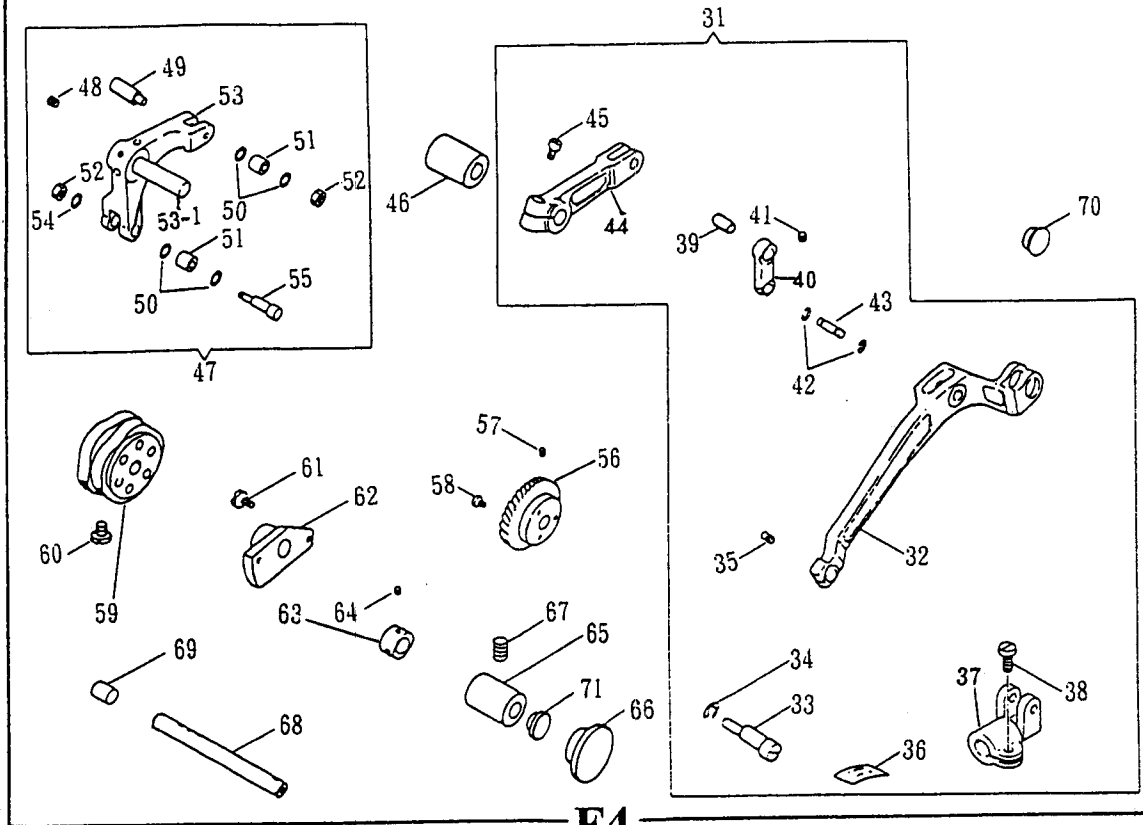
13

REF. NO	DESCRIPTION	QTY.
F 3 - 31 P	NEEDLE VIBRATING CAM SHAFT BUSHING SCREW	
F 3 - 32	NEEDLE VIBRATING CAM SHAFT BUSHING (FRONT)	
F 3 - 33	NEEDLE VIBRATING CAM SHAFT BUSHING CAP	
F 3 - 34	NEEDLE VIBRATING CAM SHAFT BUSHING (BACK)	
F 3 - 35 P	NEEDLE VIBRATING CAM SHAFT BUSHING SCREW	2
F 3 - 36	NEEDLE VIBRATING CAM SHAFT OIL HOLE PLUG	
F 3 - 37	NEEDLE VIBRATING CAM SHAFT BUSHING PLUG	

NEEDLE BAR CONNECTING LINK (FOR 40 /140)



(143用)



30
19

24

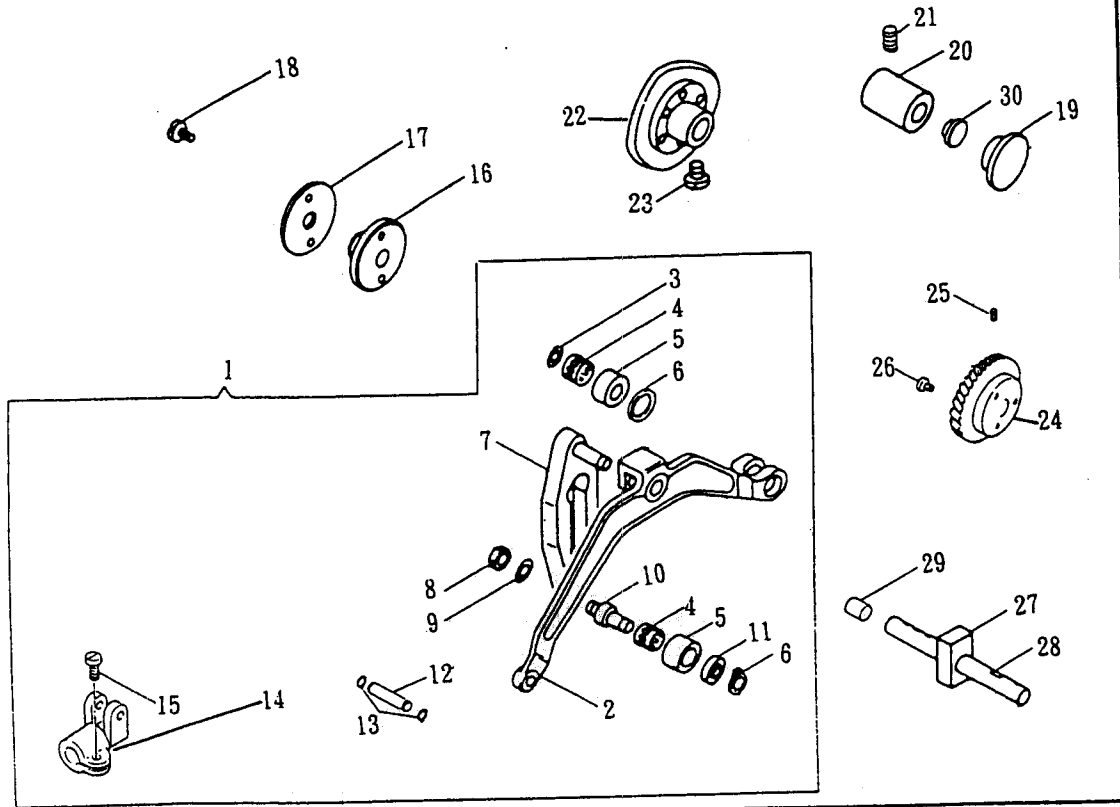
27
28

70

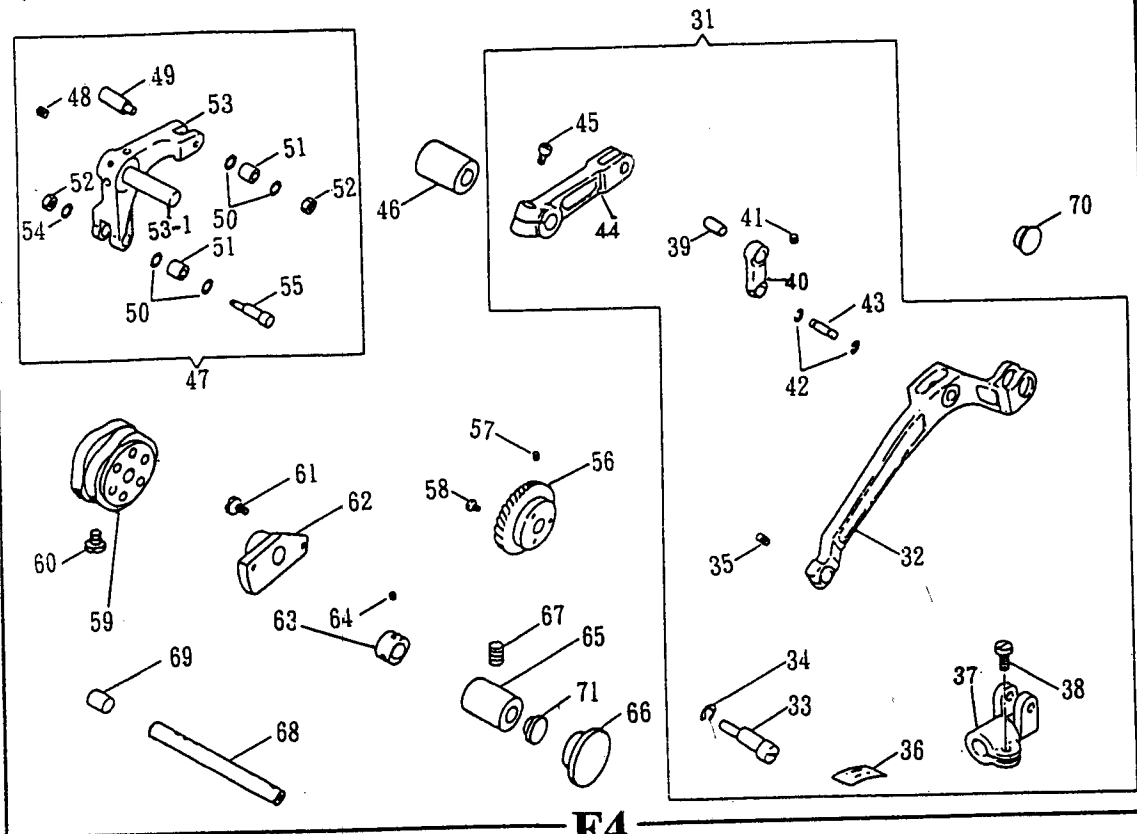
38

REF. NO	DESCRIPTION	QTY.
F 4 - 01	NEEDLE BAR CONN. LINK (CLP.)	
F 4 - 02	NEEDLE BAR CONN. LINK	
F 4 - 03	NEEDLE VIBRATING CAM ROLLER WASHER	
F 4 - 04	NEEDLE VIBRATING CAM ROLLER BEARING CAGE	2
F 4 - 05	NEEDLE VIBRATING CAM ROLLER	
F 4 - 06	NEEDLE BAR YOKE CONN. LINK SNAP RING	
F 4 - 07	NEEDLE VIBRATING CAM ROLLER GUIDE (CPL.)	
F 4 - 08 W	NEEDLE VIBRATING CAM (ECC.) NUT	
F 4 - 09	NEEDLE VIBRATING CAM ROLLER WASHER	
F 4 - 10	NEEDLE VIBRATING CAM ROLLER STUD (ECC.)	
F 4 - 11	NEEDLE VIBRATING CAM ROLLER WASHER	
F 4 - 12	NEEDLE BAR CONN. LINK HINGE STUD	
F 4 - 13	NEEDLE BAR CONN. LINK HINGE STUD SNAP RING	2
F 4 - 14	NEEDLE BAR CONN. LINK HINGE BEARING	
F 4 - 15 P	NEEDLE BAR CONN. LINK HINGE BEARING SCREW	
F 4 - 16	NEEDLE VIBRATING CAM SHAFT BUSHING (BACK)	
F 4 - 17	NEEDLE VIBRATING CAM SHAFT BUSHING (BACK)	
F 4 - 18 P	NEEDLE VIBRATING CAM SHAFT BUSHING SCREW	2
F 4 - 19	NEEDLE VIBRATING CAM SHAFT BUSHING CAP	
F 4 - 20	NEEDLE VIBRATING CAM SHAFT BUSHING (FRONT)	
F 4 - 21 P	NEEDLE VIBRATING CAM SHAFT BUSHING SCREW	
F 4 - 22	NEEDLE VIBRATING CAM	
F 4 - 23 P	NEEDLE VIBRATING CAM SET SCREW	2
F 4 - 24	NEEDLE VIBRATING WORM WHEEL	
F 4 - 25 P	NEEDLE VIBRATING WORM WHEEL SCREW	2
F 4 - 26 P	NEEDLE VIBRATING WORM WHEEL DISC SCREW	3
F 4 - 27	NEEDLE VIBRATING CAM SHAFT SLIDE BLOCK	
F 4 - 28	NEEDLE VIBRATING CAM SHAFT	
F 4 - 29	NEEDLE VIBRATING CAM SHAFT OIL HOLE PLUG	
F 4 - 30	NEEDLE VIBRATING CAM SHAFT BUSHING PLUG	
F 4 - 31	NEEDLE BAR CONN. LINK (CPL.)	
F 4 - 32	NEEDLE BAR CONN. LINK	
F 4 - 33	NEEDLE BAR CONN. LINK HINGE STUD (ECC.)	
F 4 - 34	NEEDLE BAR CONN. LINK HINGE STUD SNAP RING	
F 4 - 35 P	NEEDLE BAR CONN. LINK HINGE STUD SCREW	

NEEDLE BAR CONNECTING LINK (FOR 40 / 140)



(143用)



F4

REF. NO	DESCRIPTION	QTY.
F 4 - 36	NEEDLE BAR CONN. LINK HINGE BEARING FELT	
F 4 - 37	NEEDLE BAR CONN. LINK HINGE BEARING	
F 4 - 38 P	NEEDLE BAR CONN. LINK HINGE BEARING SCREW	
F 4 - 39	NEEDLE BAR CONN. LINK PIN	
F 4 - 40	NEEDLE BAR CONN. LINK DRIVING LEVER LINK	
F 4 - 41 P	NEEDLE BAR CONN. LINK SCREW	
F 4 - 42	NEEDLE BAR CONN. LINK RETAINING RING	2
F 4 - 43	NEEDLE BAR CONN. LINK PIN	
F 4 - 44	NEEDLE BAR CONN. LINK DRIVING LEVER (CPL.)	
F 4 - 45 P	NEEDLE BAR CONN. LINK SCREW	
F 4 - 46	Z/Z CAM FOLLOWER LEVER SHAFT BUSHING	
F 4 - 47	Z/Z CAM FOLLOWER LEVER SHAFT (CPL.)	
F 4 - 48 P	Z/Z CAM FOLLOWER LEVER SET SCREW	
F 4 - 49	Z/Z CAM FOLLOWER ROLLER HINGE STUD	
F 4 - 50	Z/Z CAM FOLLOWER ROLLER THRUST WASHER	4
F 4 - 51	Z/Z CAM FOLLOWER ROLLER	2
F 4 - 52 W	Z/Z CAM FOLLOWER ROLLER NUT	2
F 4 - 53	Z/Z CAM FOLLOWER LEVER (CPL.)	
F 4 - 54	Z/Z CAM FOLLOWER ROLLER HINGE STUD WASHER	
F 4 - 55	Z/Z CAM FOLLOWER ROLLER HINGE STUD (ECC.)	
F 4 - 56	NEEDLE VIBRATING WORM WHEEL	
F 4 - 57 P	NEEDLE VIBRATING WORM WHEEL SCREW	2
F 4 - 58 P	NEEDLE VIBRATING WORM WHEEL DISC SCREW	3
F 4 - 59	NEEDLE VIBRATING CAM	
F 4 - 60 P	NEEDLE VIBRATING CAM SCREW	
F 4 - 61 P	NEEDLE VIBRATING CAM (BACK) SCREW	2
F 4 - 62	NEEDLE VIBRATING CAM SHAFT BUSHING (BACK)	
F 4 - 63	NEEDLE VIBRATING CAM SHAFT COLLER	
F 4 - 64 P	NEEDLE VIBRATING CAM SHAFT COLLER SCREW	2
F 4 - 65	NEEDLE VIBRATING CAM SHAFT BUSHING	
F 4 - 66	NEEDLE VIBRATING CAM SHAFT BUSHING CAP	
F 4 - 67 P	NEEDLE VIBRATING CAM SHAFT BUSHING SCREW	
F 4 - 68	NEEDLE VIBRATING CAM SHAFT	
F 4 - 69	NEEDLE VIBRATING CAM SHAFT OIL HOLE PLUG	
F 4 - 70	NEEDLE POSITION FINE ADJ. HOLE PLUG	
F 4 - 71	NEEDLE VIBRATING CAM SHAFT BUSHING PLUG	

19

24

27

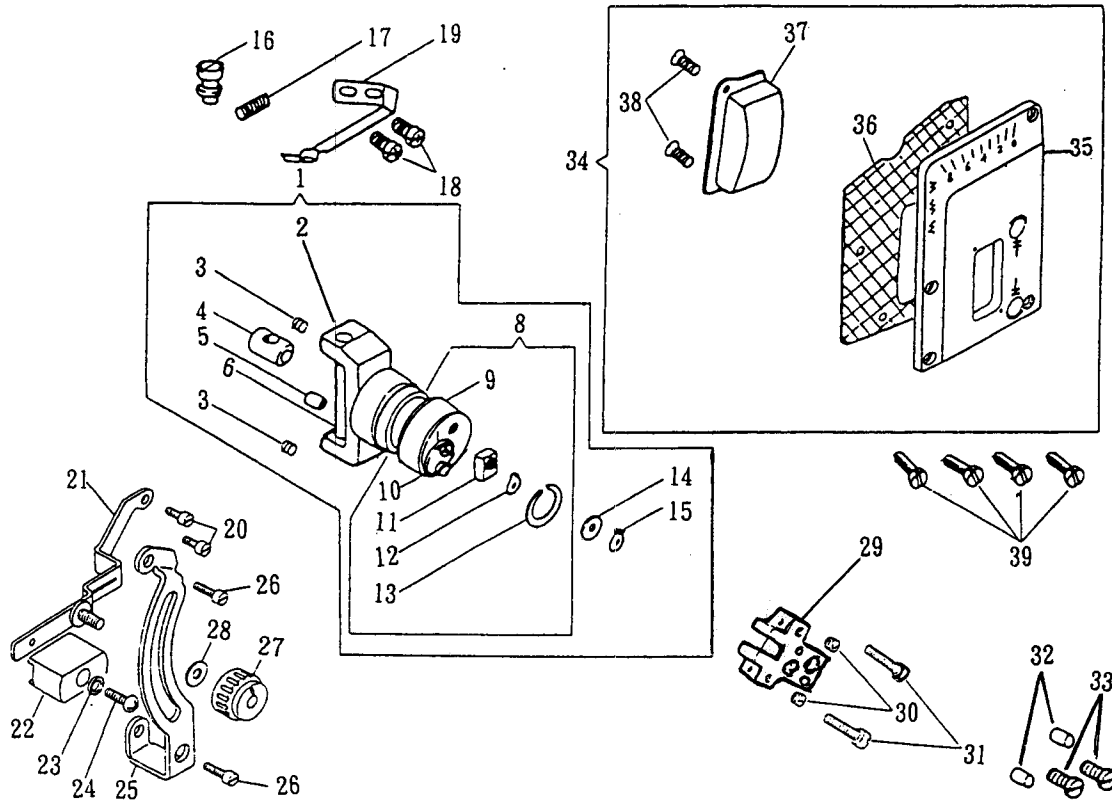
28

D

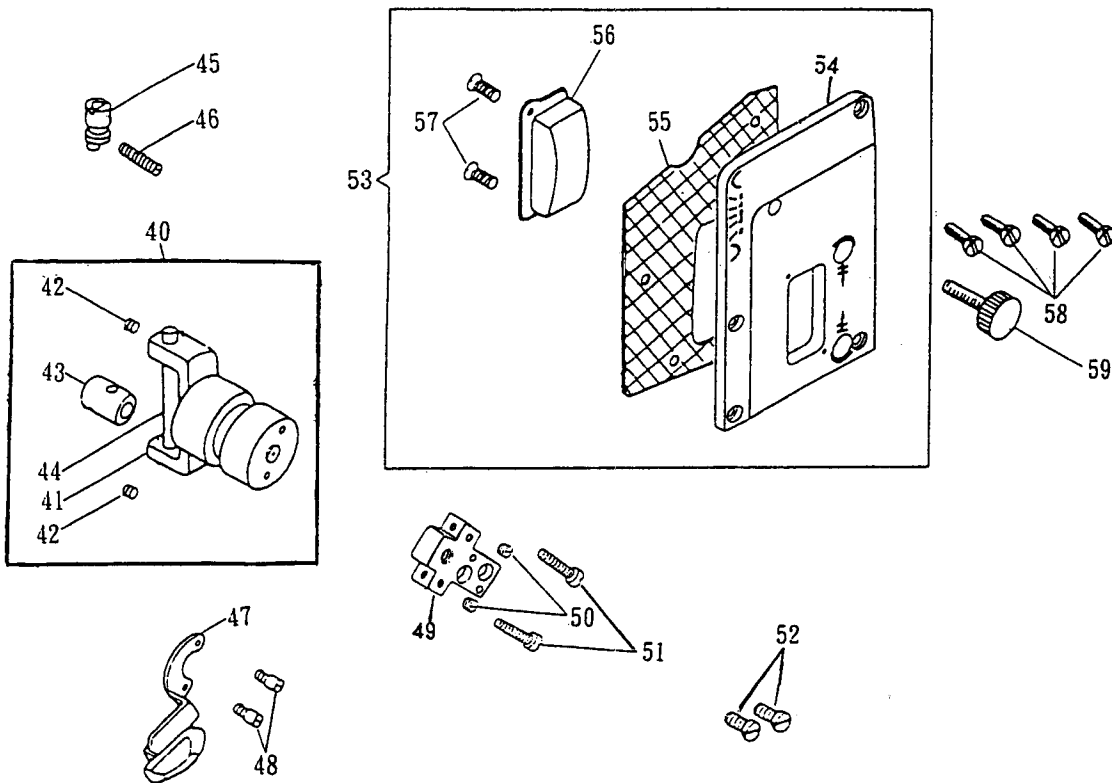
70

38

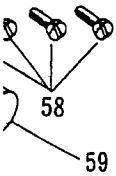
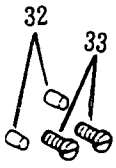
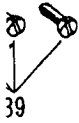
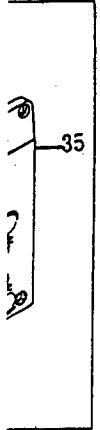
NEEDLE VIBRATING YOKE CONNECTING LINK CARRIER FRAME (CPL.) (FOR 20/21/40/140)



(143用)

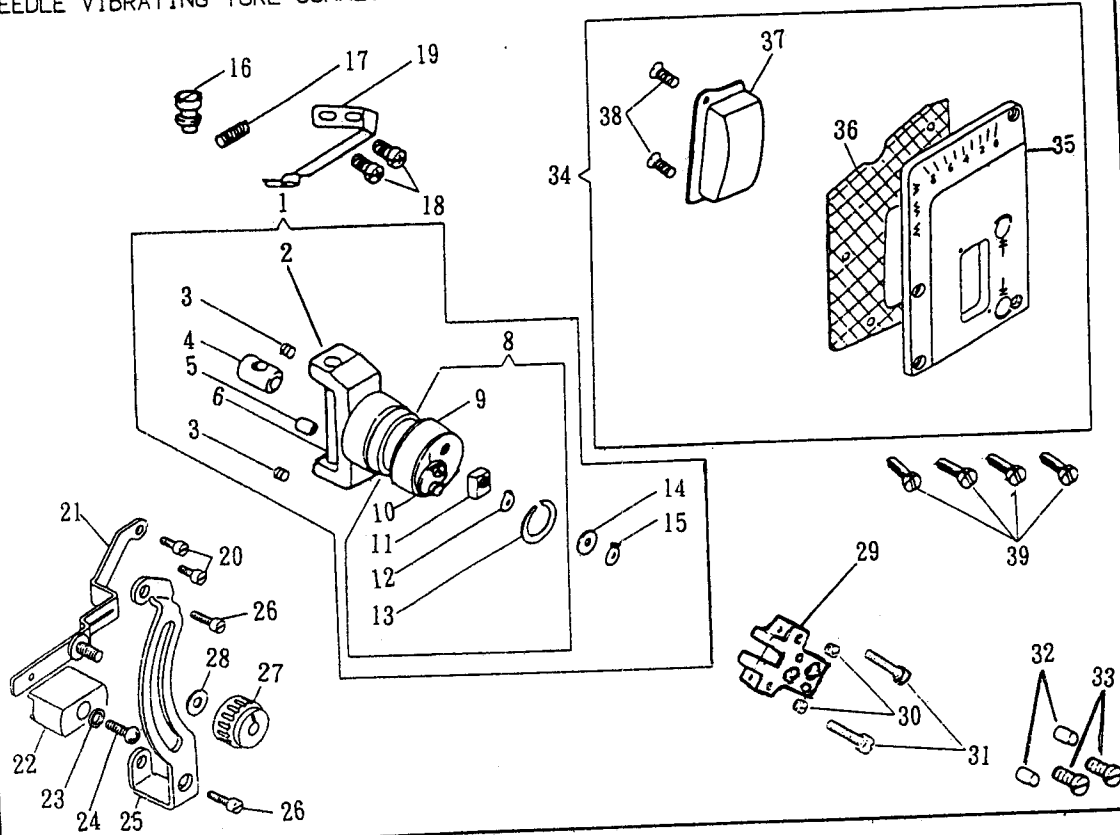


F5

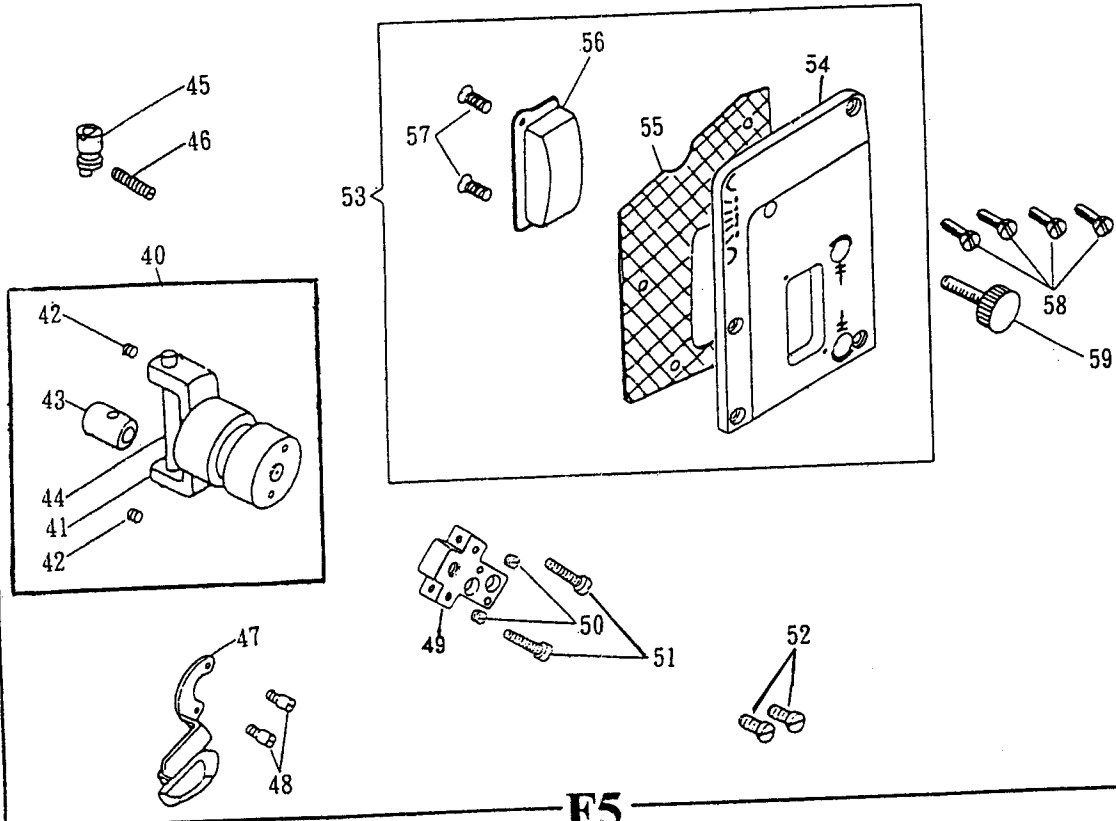


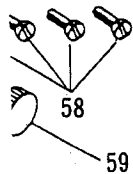
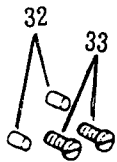
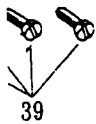
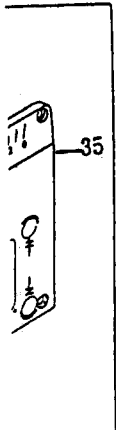
REF. NO	DESCRIPTION	QTY.
F 5 - 01	NEEDLE VIBRATING YOKE.CARRIER FRAME.ADJ.BUSHING	
F 5 - 02	NEEDLE VIBRATING YOKE.LINK CARRIER FRAME	
F 5 - 03 P	NEEDLE VIBRATING YOKE.LINK CARRIER FRAME SCREW	2
F 5 - 04	NEEDLE VIBRATING YOKE.LINK SLIDE BEARING	
F 5 - 05	NEEDLE VIBRATING YOKE.LINK CARRIER FRAME STUD	
F 5 - 06	NEEDLE VIBRATING YOKE.LINK SLIDE STUD	
F 5 - 08	NEEDLE POSITION ADJ. ECC. (CPL)	
F 5 - 09	NEEDLE POSITION ADJ. ECC.BUSHING (LARGE)	
F 5 - 10	NEEDLE POSITION ADJ. ECC.BUSHING (SMALL)	
F 5 - 11	NEEDLE POSITION ADJ. ECC.BUSHING (SMALL)	
F 5 - 12	NEEDLE POSITION ADJ. ECC.BUSHING (SMALL)	
F 5 - 13	NEEDLE POSITION ADJ. ECC.BUSHING (SMALL)	2
F 5 - 14	NEEDLE VIBRATING YOKE CONN. CUP SPRING	
F 5 - 15	NEEDLE VIBRATING YOKE CONN. SNAP RING	
F 5 - 16	NEEDLE POSITION ADJ.CAM REGULATING STUD	
F 5 - 17 P	NEEDLE POSITION ADJ. SCREW	
F 5 - 18 P	NEEDLE POSITION ADJ. SCREW	2
F 5 - 19	NEEDLE POSITION ADJ. ECC. POSITION SPRING	
F 5 - 20 P	NEEDLE POSITION ADJ. ECC. STOP SCREW	2
F 5 - 21	NEEDLE POSITION (FINE POSITION) ADJ. LEVER	
F 5 - 22	NEEDLE POSITION (FINE POSITION) ADJ. LEVER	
F 5 - 23	NEEDLE POSITION SCREW WASHER	
F 5 - 24 P	NEEDLE POSITION SCREW.	
F 5 - 25	NEEDLE POSITION (FINE POSITION) ADJ. LEVER BRACKET	
F 5 - 26 P	NEEDLE POSITION SCREW.	2
F 5 - 27	NEEDLE POSITION (FINE POSITION) ADJ. LEVER KNOB.	
F 5 - 28	NEEDLE POSITION (FINE POSITION) ADJ. WASHER	
F 5 - 29	NEEDLE POSITION ADJ. ECC. SLIDE BLOCK BRACKET (CPL)	
F 5 - 30 P	NEEDLE POSITION SCREW.	2
F 5 - 31 P	NEEDLE POSITION ADJ. CAM STOP SCREW	2
F 5 - 32	NEEDLE POSITION ADJ.PIN	2
F 5 - 33 P	NEEDLE POSITION SCREW.	2
F 5 - 34	ARM COVER (FRONT) (CPL.)	
F 5 - 35	ARM COVER (FRONT) GASKET	
F 5 - 36	ARM COVER (FRONT) GASKET	

NEEDLE VIBRATING YOKE CONNECTING LINK CARRIER FRAME (CPL.) (FOR 20/21/40/140)



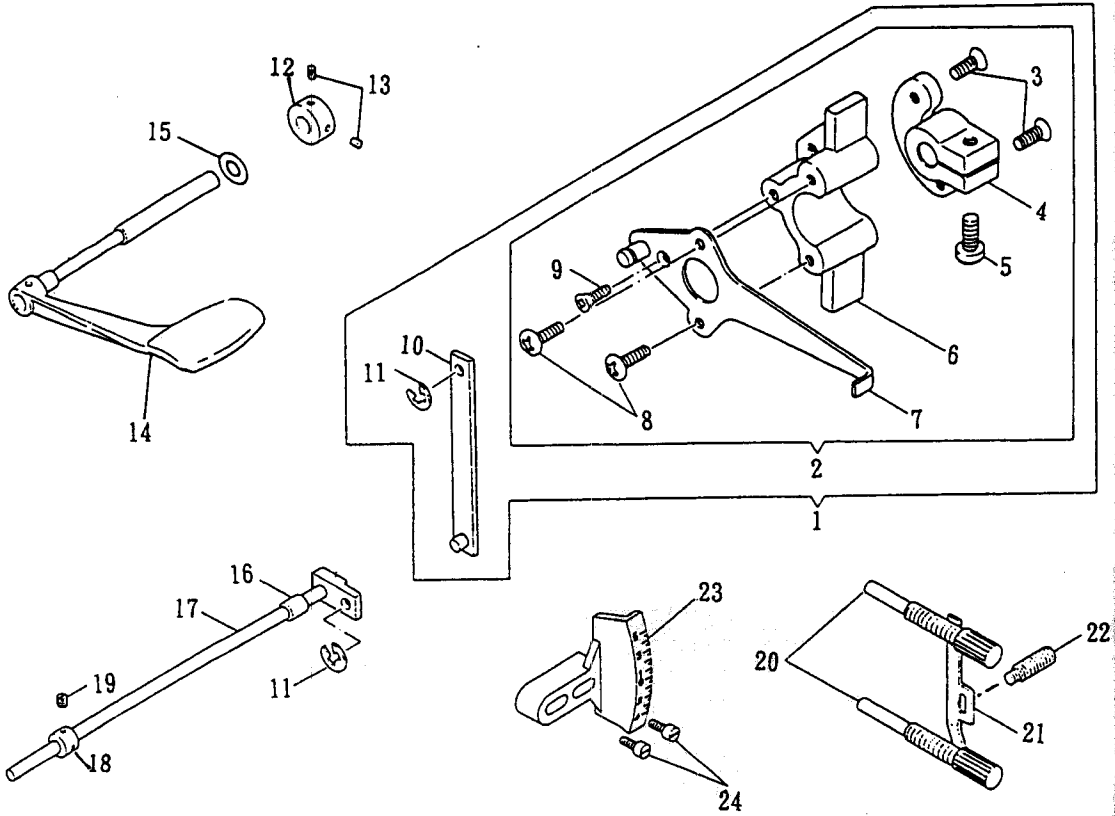
(143用)



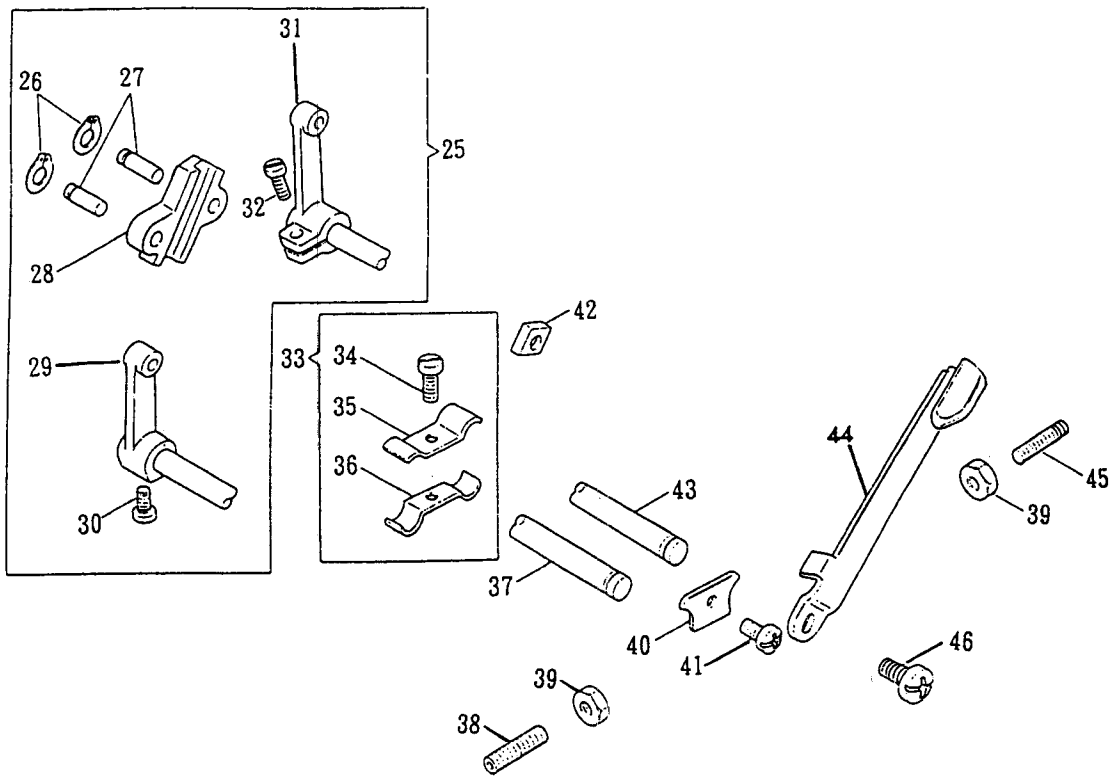


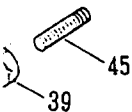
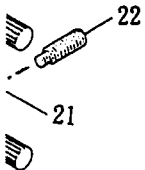
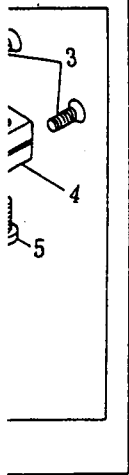
REF. NO	DESCRIPTION	QTY.
F 5 - 37	STITCH LENGTH INDICATOR PLATE WINDOW	
F 5 - 38 P	STITCH LENGTH INDICATOR PLATE WINDOW SCREW	2
F 5 - 39 P	ARM COVER (FRONT) SCREW	4
F 5 - 40	NEEDLE VIBRATING YOKE CONN. LINK CARRIER FRAME (CPL)	
F 5 - 41	NEEDLE VIBRATING YOKE. LINK CARRIER FRAME	
F 5 - 42 P	NEEDLE VIBRATING YOKE. LINK CARRIER FRAME SCREW	2
F 5 - 43	NEEDLE VIBRATING YOKE CONN. LINK SLIDE BEARING	
F 5 - 44	NEEDLE VIBRATING YOKE CONN. LINK SLIDE STUD	
F 5 - 45	NEEDLE POSITION ADJ. CAM REGULAT STUD	
F 5 - 46 P	NEEDLE POSITION ADJ. SCREW	
F 5 - 47	NEEDLE POSITION ADJ. LEVER	
F 5 - 48 P	NEEDLE POSITION ADJ. ECC. STOP SCREW	2
F 5 - 49	NEEDLE POSITION ADJ. ECC. SLIDE BLOCK BRACKET	
F 5 - 50 P	NEEDLE POSITION ADJ. SET SCREW	2
F 5 - 51 P	NEEDLE POSITION ADJ. CAM STOP SCREW	2
F 5 - 52 P	NEEDLE POSITION ADJ. ECC. SCREW	2
F 5 - 53	ARM COVER (FRONT) (CPL.)	
F 5 - 54	ARM COVER (FRONT), GASKET	
F 5 - 55	ARM COVER (FRONT), GASKET	
F 5 - 56	STITCH LENGTH INDICATOR PLATE WINDOW	
F 5 - 57 P	STITCH LENGTH INDICATOR PLATE WINDOW SCREW	2
F 5 - 58 P	ARM CDVER (FRONT) SCREW	4
F 5 - 59	NEEDLE POSITION ADJUSTING CAM SET SCREW	

FEED REGULATING INDICATOR LINK



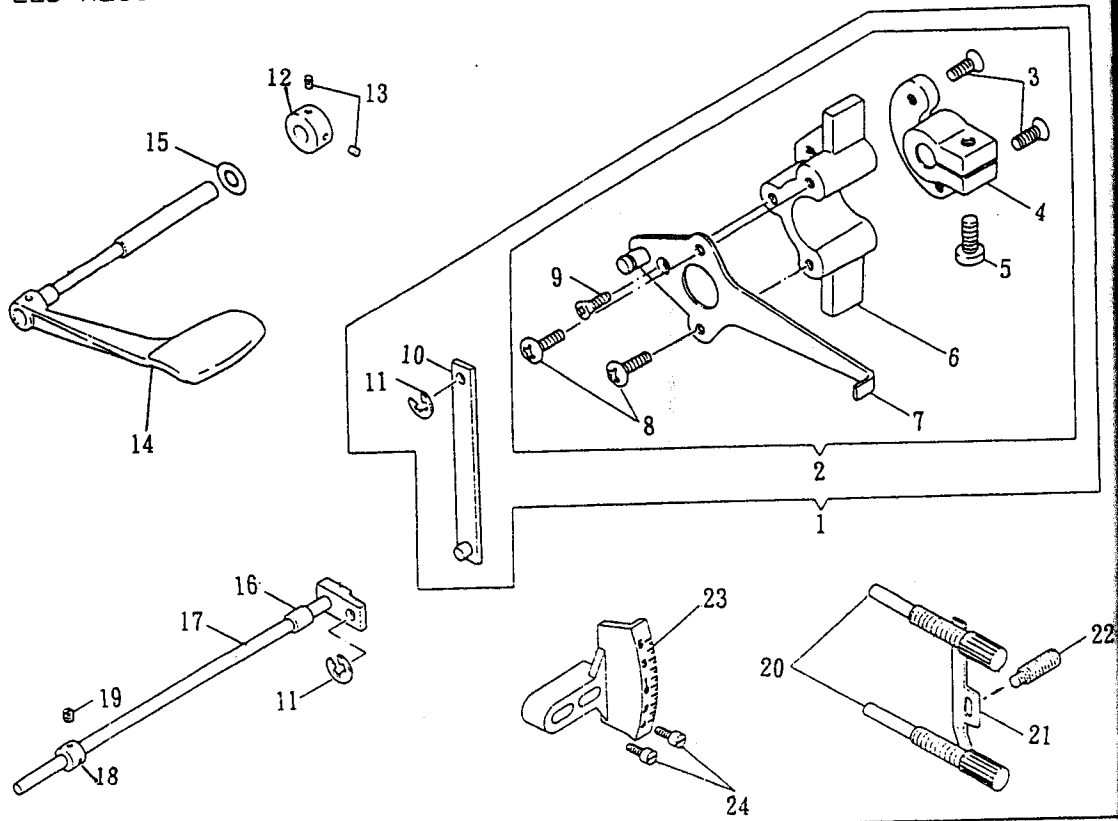
NEEDLE VIBRATING ADJUSTING BRACKET



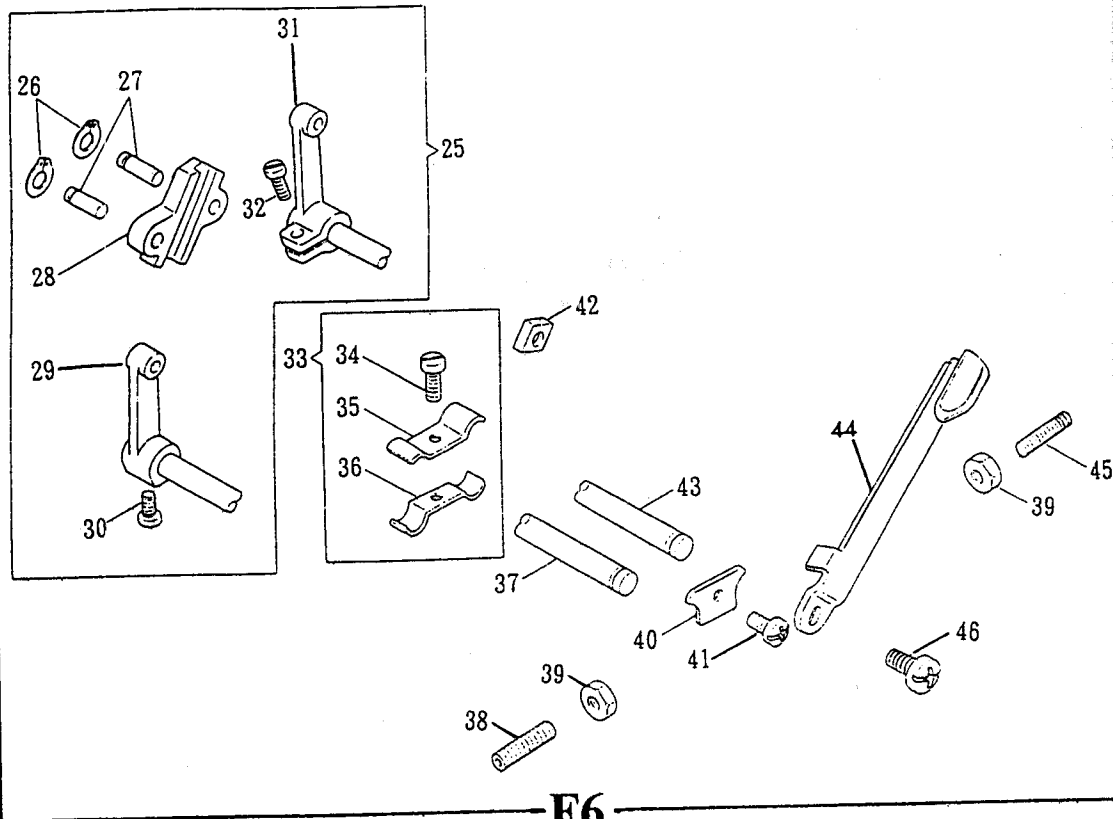


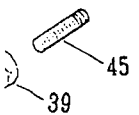
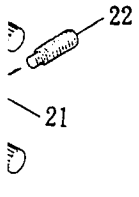
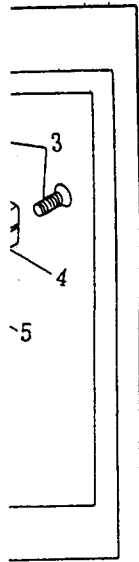
REF. NO	DESCRIPTION	QTY.
F 6 - 01	FEED REGULATING INDICATOR, LINK (CPL.)	
F 6 - 02	FEED REGULATING INDICATOR (CPL.)	
F 6 - 03 P	FEED REGULATING INDICATOR (BODY) SCREW	2
F 6 - 04	FEED REGULATING INDICATOR HUB	
F 6 - 05 P	FEED REGULATING INDICATOR HUB SCREW	
F 6 - 06	FEED REGULATING INDICATOR (BODY)	
F 6 - 07	FEED REGULATING INDICATOR PLATE (CPL.)	
F 6 - 08 P	FEED REGULATING INDICATOR SCREW (LARGE)	
F 6 - 09 P	FEED REGULATING INDICATOR SCREW (SMALL)	
F 6 - 10	FEED REGULATING INDICATOR LEVER CONNECTING LINK	
F 6 - 11	FEED REGULATING INDICATOR PLATE PIN RETAINER	2
F 6 - 12	FEED REGULATING LEVER SHAFT COLLAR	
F 6 - 13 P	FEED REGULATING LEVER SHAFT COLLAR SET SCREW	2
F 6 - 14	FEED REGULATING LEVER	
F 6 - 15	FEED REGULATING LEVER SHAFT O-RING	
F 6 - 16	FEED REGULATING CONN. SHAFT BUSHING	
F 6 - 17	FEED REGULATING CONN. SHAFT	
F 6 - 18	FEED REGULATING CONN. SHAFT COLLAR	
F 6 - 19 P	FEED REGULATING CONN. SHAFT COLLAR SET SCREW	2
F 6 - 20	FEED REGULATING SHAFT INDICATOR STOP SCREW	2
F 6 - 21	FEED REGULATING SHAFT INDICATOR STOP SCREW SPRING	
F 6 - 22 P	FEED REGULATING RETAINING SPRING SCREW	
F 6 - 23	STITCH LENGTH INDICATOR PLATE	
F 6 - 24 P	STITCH LENGTH INDICATOR PLATE SCREW	2
F 6 - 25	NEEDLE VIBRATING ADJ. BRACKET (CPL.)	
F 6 - 26	NEEDLE BAR YOKE CONN. SNAP RING	2
F 6 - 27	NEEDLE POSTION ADJ.ECC. BUSHING (SMALL)	2
F 6 - 28	NEEDLE VIBRATING ADJ. BRACKET	
F 6 - 29	NEEDLE VIBRATING ADJ. GUIDE CRANK	
F 6 - 30 P	NEEDLE VIBRATING ADJ. GUIDE CRANK SET SCREW	
F 6 - 31	NEEDLE VIBRATING ADJ. CRANK	
F 6 - 32 P	NEEDLE VIBRATING CRANK PINCH SCREW	
F 6 - 33	NEEDLE VIBRATING ADJ. SHAFT CLAMPING BRACKET	
F 6 - 34 P	NEEDLE VIBRATING ADJ. SCREW	
F 6 - 35	NEEDLE VIBRATING ADJ. SHAFT CLAMPING BRACKET (UPPER)	

FEED REGULATING INDICATOR LINK



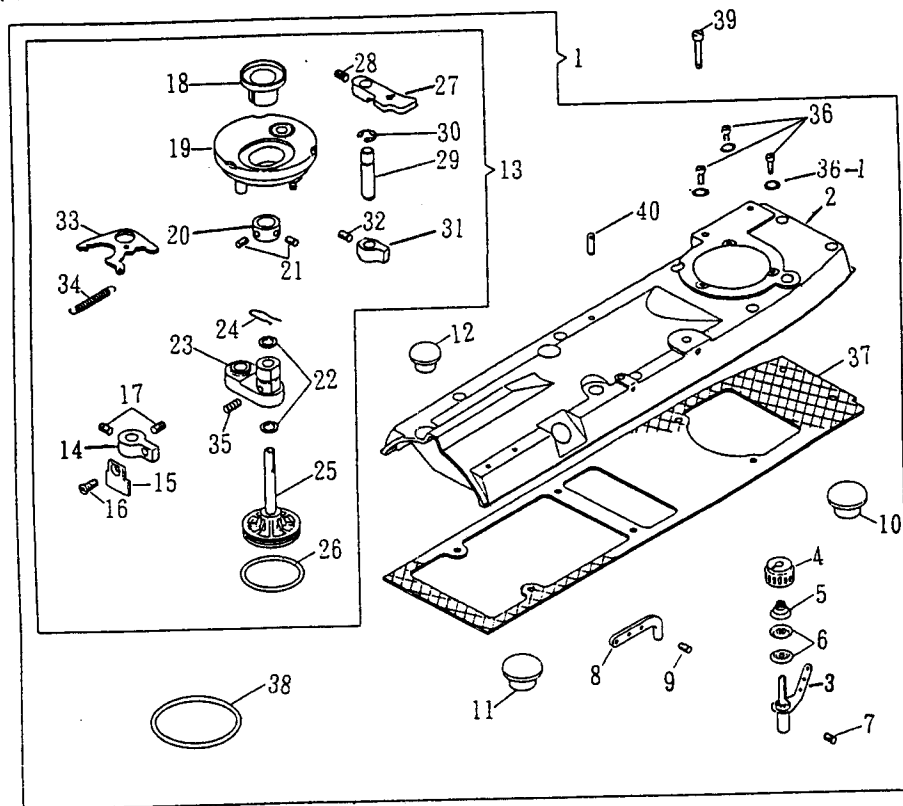
NEEDLE VIBRATING ADJUSTING BRACKET



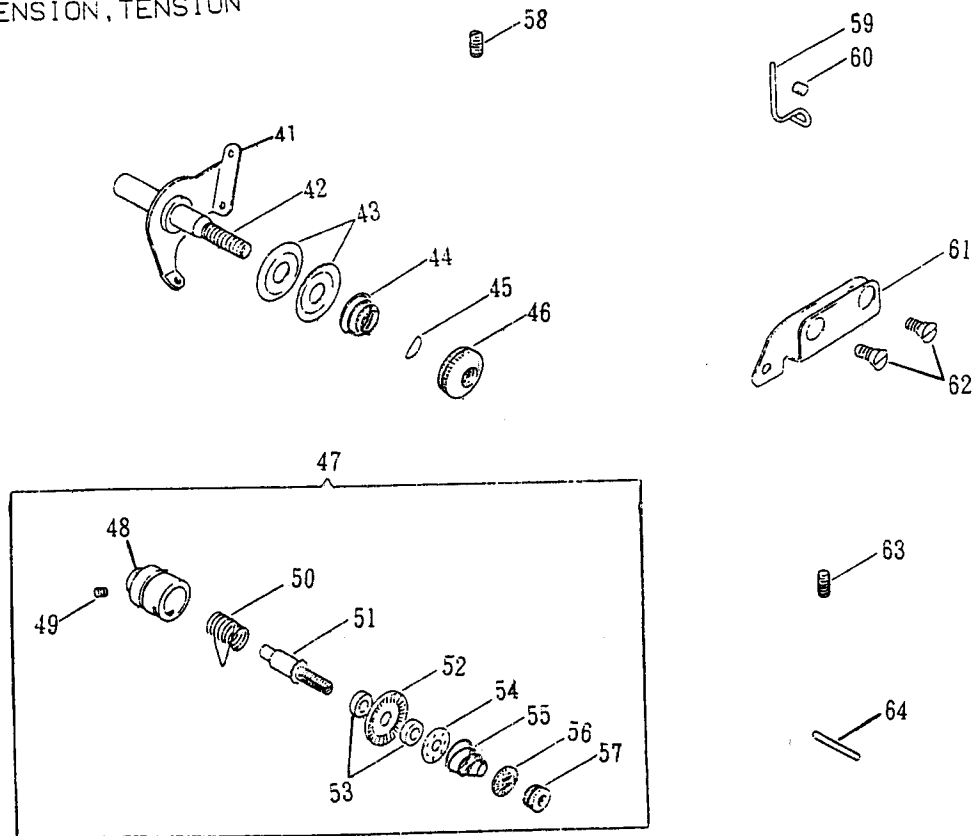


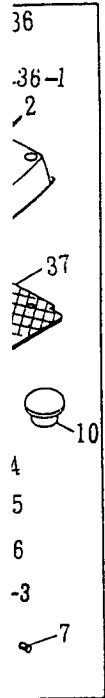
REF. NO	DESCRIPTION	QTY.
F 6 - 36	NEEDLE VIBRATING ADJ. SHAFT CLAMPING BRACKET (LOWER)	
F 6 - 37	NEEDLE VIBRATING ADJ. GUIDE CRANK SHAFT	
F 6 - 38 P	NEEDLE VIBRATING ADJ. LEVER STOP SCREW (LEFT)	
F 6 - 39 W	NEEDLE VIBRATING ADJ. LEVER STOP SCREW NUT	2
F 6 - 40	NEEDLE VIBRATING ADJ. SHAFT RETAINER	
F 6 - 41 P	NEEDLE VIBRATING ADJ. SHAFT RETAINER SCREW	
F 6 - 42	NEEDLE VIBRATING ADJ. BRACKET SLIDE BLOCK	
F 6 - 43	NEEDLE VIBRATING ADJ. CRANK SHAFT	
F 6 - 44	NEEDLE VIBRATING ADJ. LEVER (CPL.)	
F 6 - 45 P	NEEDLE VIBRATING ADJ. SCREW (RIGHT)	
F 6 - 46 P	NEEDLE VIBRATING ADJ. LEVER SCREW	

ARM COVER (TOP) (ASSEMBLY)



PRETENSION, TENSION

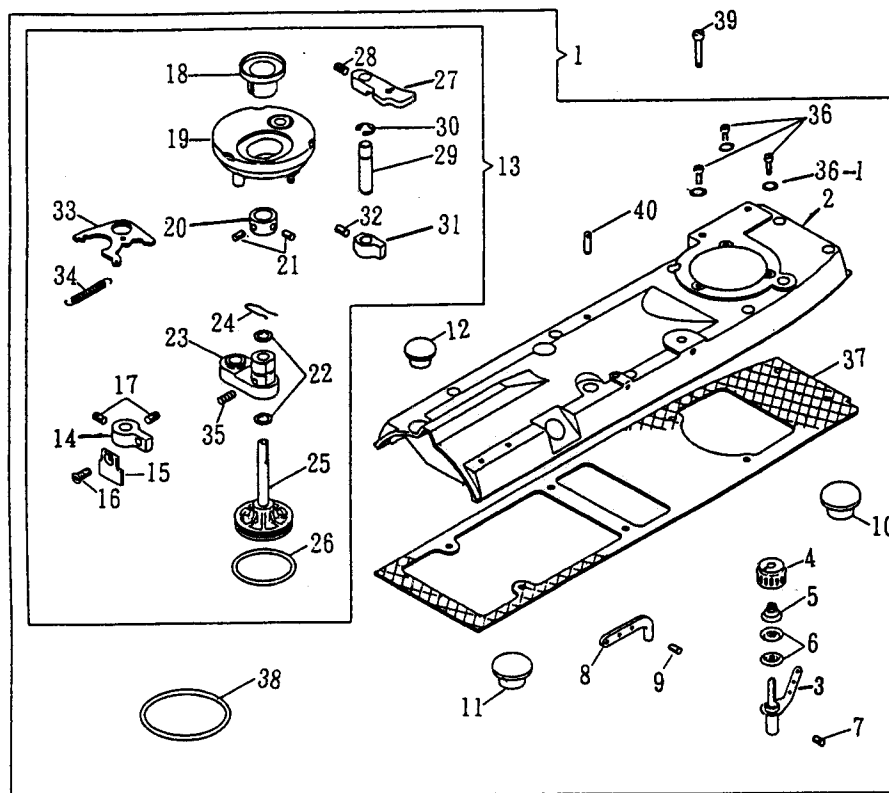




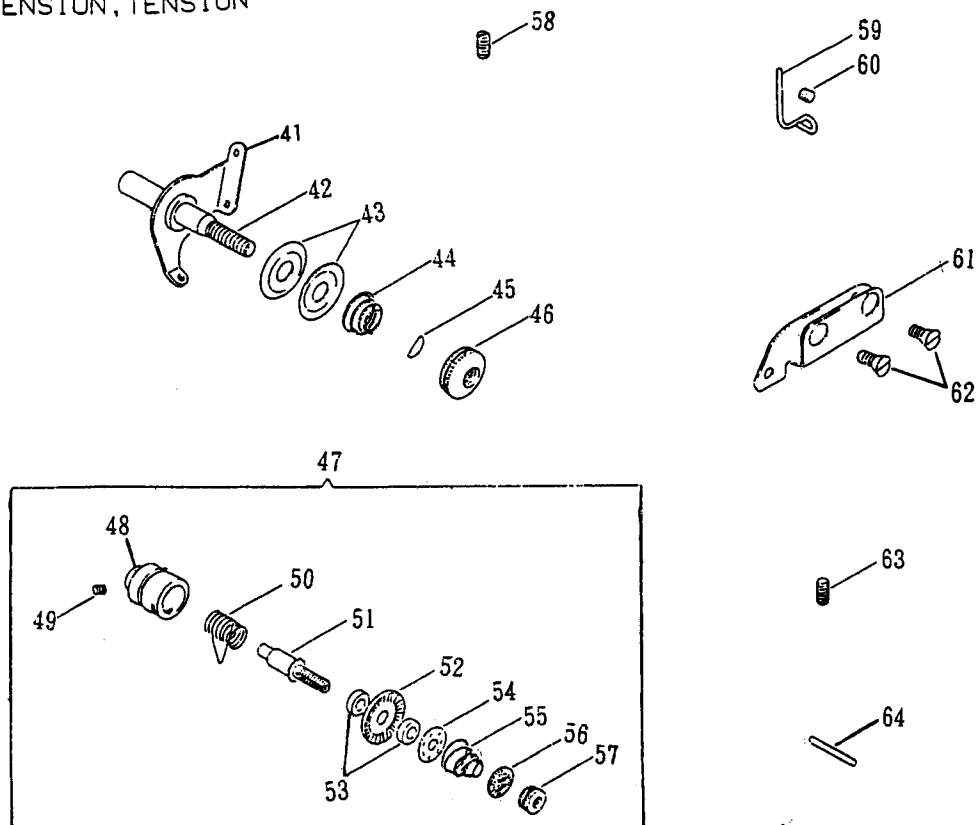
REF. NO	DESCRIPTION	QTY.
F 7 - 01	ARM COVER (TOP)(ASS'Y)	
F 7 - 02	ARM COVER (TOP), GASKET	
F 7 - 03	BOBBIN WINDER TENSION	
F 7 - 04	BOBBIN WINDER TENSION REGULATING THUMB NUT	
F 7 - 05	BOBBIN WINDER TENSION SPRING	
F 7 - 06	BOBBIN WINDER TENSION DISC	2
F 7 - 07 P	BOBBIN WINDER TENSION SCREW	
F 7 - 08	THREAD RETAINER (3-HOLES)	
F 7 - 09 P	THREAD RETAINER (3-HOLES) SCREW	
F 7 - 10	ARM COVER (TOP) PLUG (BACK)	
F 7 - 11	ARM COVER (TOP) PLUG (CENTER)	
F 7 - 12	PRESSER FOOT PRESSURE ADJ. HOLE PLUG	
F 7 - 13	BOBBIN WINDER (CPL.)	
F 7 - 14	BOBBIN WINDER STOPPER	
F 7 - 15	BOBBIN WINDER STOPPER BOARD	
F 7 - 16 P	BOBBIN WINDER STOPPER BOARD SCREW	
F 7 - 17 P	BOBBIN WINDER STOPPER SCREW	2
F 7 - 18	BOBBIN WINDER SPINDLE THREAD GUARD	
F 7 - 19	BOBBIN WINDER (BODY)	
F 7 - 20	BOBBIN WINDER SHAFT COLLAR	
F 7 - 21 P	BOBBIN WINDER SHAFT COLLAR SCREW	2
F 7 - 22	BOBBIN WINDER SHAFT FRICTION WHEEL WASHER	2
F 7 - 23	BOBBIN WINDER SHAFT BUSHING	
F 7 - 24	BOBBIN WINDER SHAFT FRICTION WHEEL SPRING	
F 7 - 25	BOBBIN WINDER SHAFT FRICTION WHEEL (BODY)	
F 7 - 26	BOBBIN WINDER SHAFT FRICTION WHEEL RING	
F 7 - 27	BOBBIN WINDER LEVER	
F 7 - 28 P	BOBBIN WINDER LEVER SCREW	
F 7 - 29	BOBBIN WINDER LEVER STUD	
F 7 - 30	BOBBIN WINDER LEVER STUD LINK LOCK WASHER	
F 7 - 31	BOBBIN WINDER REGULATOR	
F 7 - 32 P	BOBBIN WINDER REGULATOR SCREW	
F 7 - 33	BOBBIN WINDER BRACKET ACTUATING PLATE	
F 7 - 34	BOBBIN WINDER SPRING	
F 7 - 35 P	BOBBIN WINDER SHAFT BUSHING SPRING	

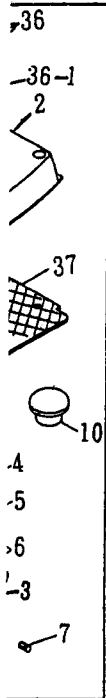


ARM COVER (TOP) (ASSEMBLY)



PRETENSION, TENSION

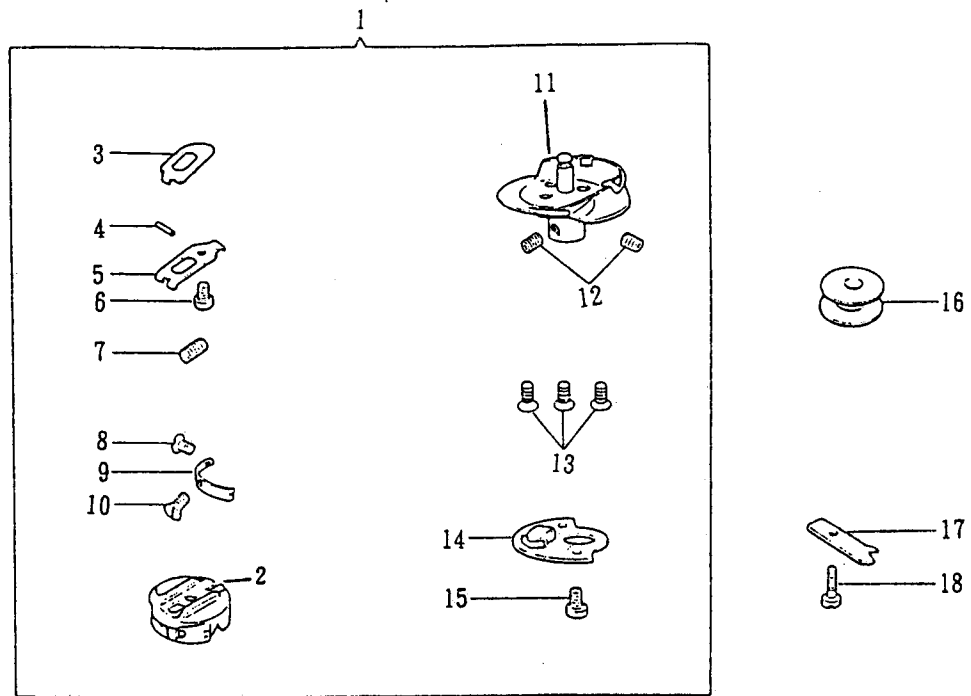




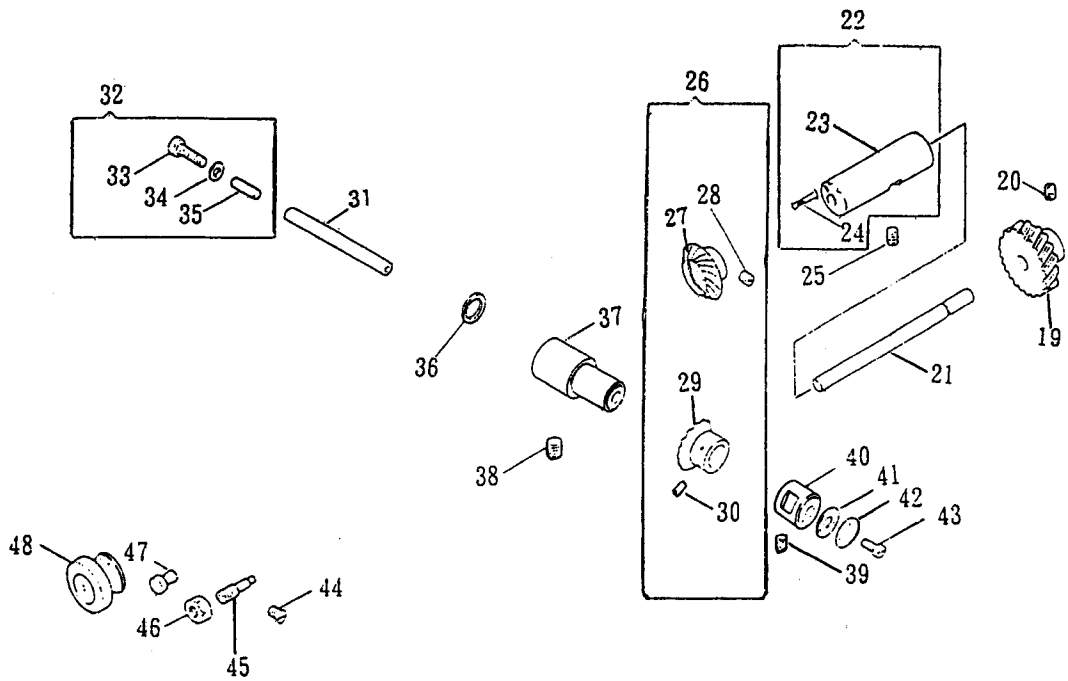
REF. NO	DESCRIPTION	QTY.
F 7 - 36 P	BOBBIN WINDER SCREW	3
F 7 - 37	ARM COVER (TOP) GASKET	
F 7 - 38	BOBBIN WINDER GASKET	
F 7 - 39 P	ARM COVER (TOP) SCREW	8
F 7 - 40	ARM COVER (TOP) THREAD GUIDE STUD	
F 7 - 41	PRETENSION	
F 7 - 42	PRETENSION BRACKET	
F 7 - 43	PRETENSION DISC	2
F 7 - 44	PRETENSION SPRING	
F 7 - 45	PRETENSION ADJUSTING NUT SPRING	
F 7 - 46	PRETENSION ADJUSTING NUT	
F 7 - 47	TENSION (CPL.)	
F 7 - 48	THREAD TAKE-UP SPRING REGULATOR	
F 7 - 49 P	TENSION STUD SET SCREW	
F 7 - 50	THREAD TAKE-UP SPRING	
F 7 - 51	TENSION STUD	
F 7 - 52	TENSION FELT WASHER	2
F 7 - 53	TENSION WHEEL	
F 7 - 54	TENSION RELEASING DISC	
F 7 - 55	TENSION SPRING	
F 7 - 56	TENSION THUMB NUT LOCK WASHER	
F 7 - 57	TENSION THUMB NUT	
F 7 - 58 P	PRETENSION BRACKET SET SCREW	
F 7 - 59	THREAD PULL OFF	
F 7 - 60 P	THREAD PULL OFF SET SCREW	
F 7 - 61	THREAD GUIDE	
F 7 - 62 P	THREAD GUIDE SCREW	2
F 7 - 63 P	THREAD REGULATOR SET SCREW	
F 7 - 64	TENSION RELEASING PIN	



HOOK, BOBBIN CASE



HOOK SHAFT BEVEL GEAR



REF. NO	DESCRIPTION	QTY.
F 8 - 01	HOOK AND BOBBIN CASE (CPL.)	
F 8 - 02	BOBBIN CASE CAP	
F 8 - 03	BOBBIN CASE LATCH LEVER	
F 8 - 04	BOBBIN CASE LATCH PIN	
F 8 - 05	BOBBIN CASE LATCH	
F 8 - 06 P	BOBBIN CASE LATCH STOP SCREW	
F 8 - 07 P	BOBBIN CASE LATCH SPRING	
F 8 - 08 P	BOBBIN CASE CAP TENSION SPRING SCREW	
F 8 - 09	BOBBIN CASE CAP TENSION SPRING	
F 8 - 10 P	BOBBIN CASE CAP TENSION SPRING SCREW	
F 8 - 11	HOOK	
F 8 - 12 P	HOOK SET SCREW	2
F 8 - 13 P	HOOK GIB SCREW	3
F 8 - 14	HOOK NEEDLE GUARD AND COUNTERBALANCE	
F 8 - 15 P	HOOK NEEDLE GUARD AND COUNTERBALANCE SCREW	
F 8 - 16	BOBBIN	
F 8 - 17	BOBBIN CASE STOP	
F 8 - 18 P	BOBBIN CASE STOP SCREW	
F 8 - 19	HOOK DRIVING SHAFT HELICAL GEAR	
F 8 - 20 P	HOOK DRIVING SHAFT HELICAL GEAR SET SCREW	2
F 8 - 21	HOOK DRIVING SHAFT	
F 8 - 22	HOOK DRIVING SHAFT BUSHING (CPL.)	
F 8 - 23	HOOK DRIVING SHAFT BUSHING	
F 8 - 24	HOOK DRIVING SHAFT BUSHING WICK	
F 8 - 25 P	BED SHAFT BUSHING SET SCREW	
F 8 - 26	A PAIR OF BEVEL GEARS	
F 8 - 27	HOOK DRIVING SHAFT BEVEL GEAR	
F 8 - 28 P	HOOK DRIVING SHAFT BEVEL GEAR SET SCREW	2
F 8 - 29	HOOK SHAFT BEVEL GEAR	
F 8 - 30 P	HOOK SHAFT BEVEL GEAR SET SCREW	2
F 8 - 31	HOOK SHAFT	
F 8 - 32	HOOK SHAFT OIL FILTER WICK HOLDER (CPL.)	
F 8 - 33 P	HOOK SHAFT OIL FILTER WICK HOLDER	
F 8 - 34	HOOK SHAFT OIL FILTER WICK HOLDER SEAL	
F 8 - 35	HOOK SHAFT OIL FILTER FELT	

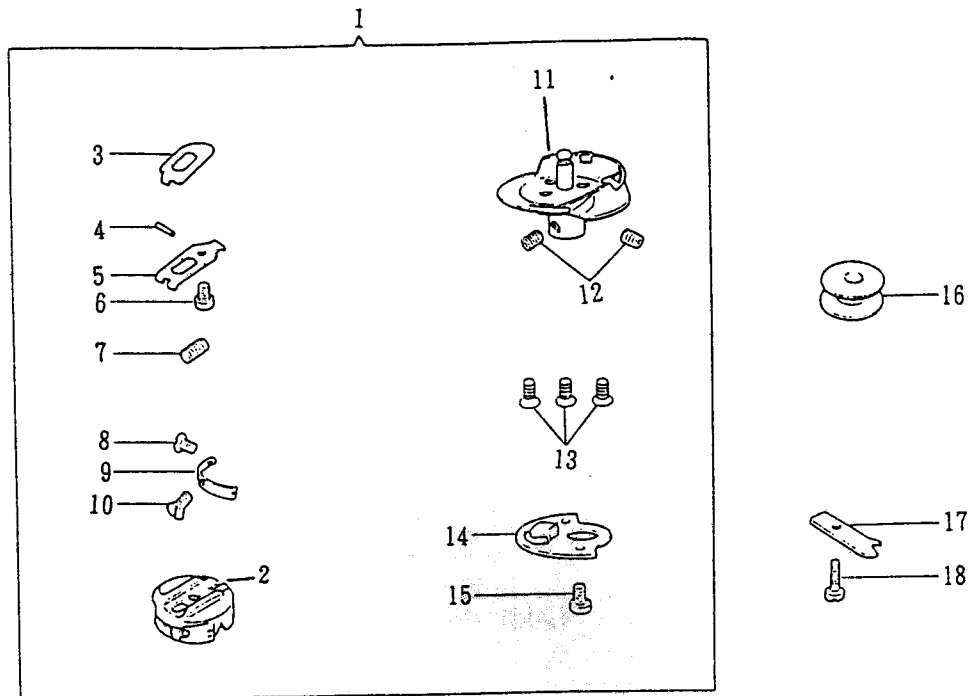
3-16

—17

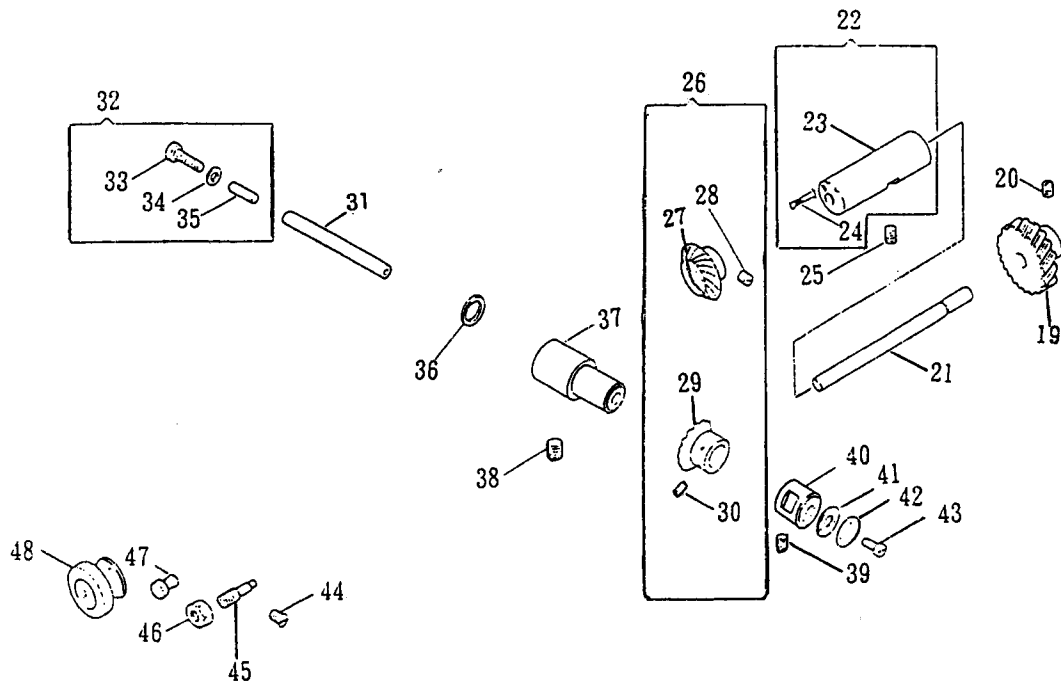
—18

20-
19

HOOK, BOBBIN CASE



HOOK SHAFT, BEVEL GEAR



REF. NO	DESCRIPTION	QTY.
F 8 - 36	HOOK SHAFT BUSHING (BACK) OIL SEAL	
F 8 - 37	HOOK SHAFT BUSHING (BACK)	
F 8 - 38 P	HOOK SHAFT BUSHING (BACK) SCREW	
F 8 - 39 P	HOOK SHAFT BUSHING (FRONT) SET SCREW	
F 8 - 40	HOOK SHAFT BUSHING (FRONT)	
F 8 - 41	HOOK SHAFT BUSHING CAP GASKET	
F 8 - 42	HOOK SHAFT BUSHING CAP	
F 8 - 43 P	HOOK SHAFT BUSHING (FRONT) CAP SCREW	3
F 8 - 44 P	HOOK OIL BYPASS SCREW	
F 8 - 45	HOOK OIL REGULAING SCREW	
F 8 - 46 W	HOOK OIL REGULAING SCREW LOCK NUT	
F 8 - 47	HOOK SHAFT GEAR BOX PLUG	
F 8 - 48	HOOK GEAR BOX VENT CAP	

—16

—17

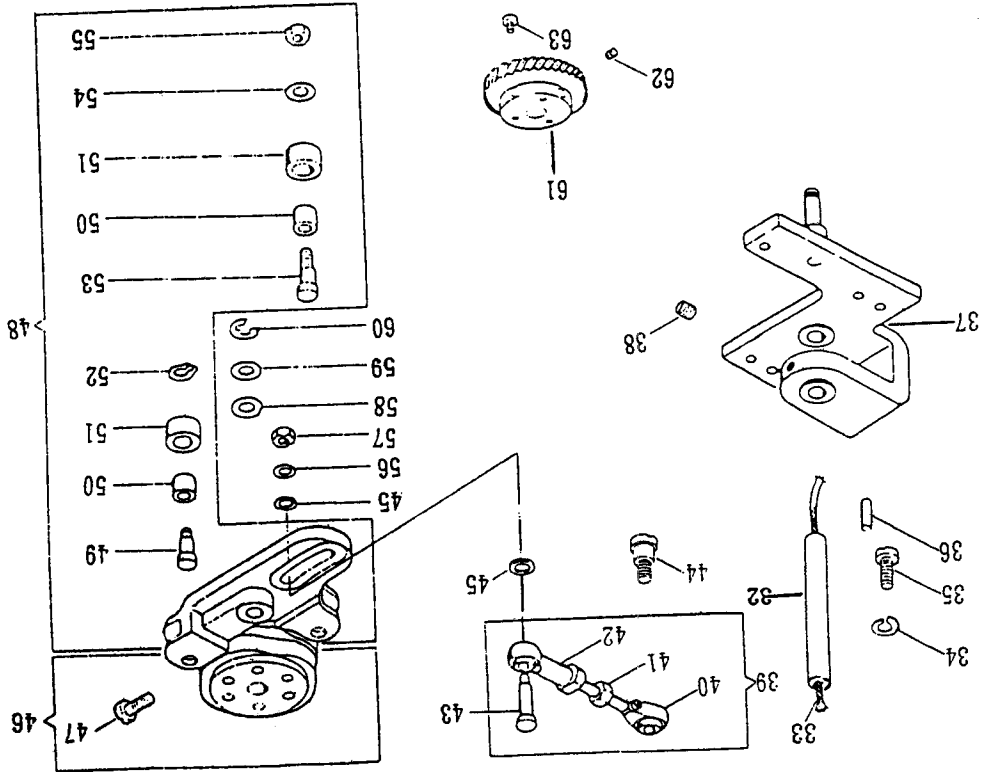
—18

20-

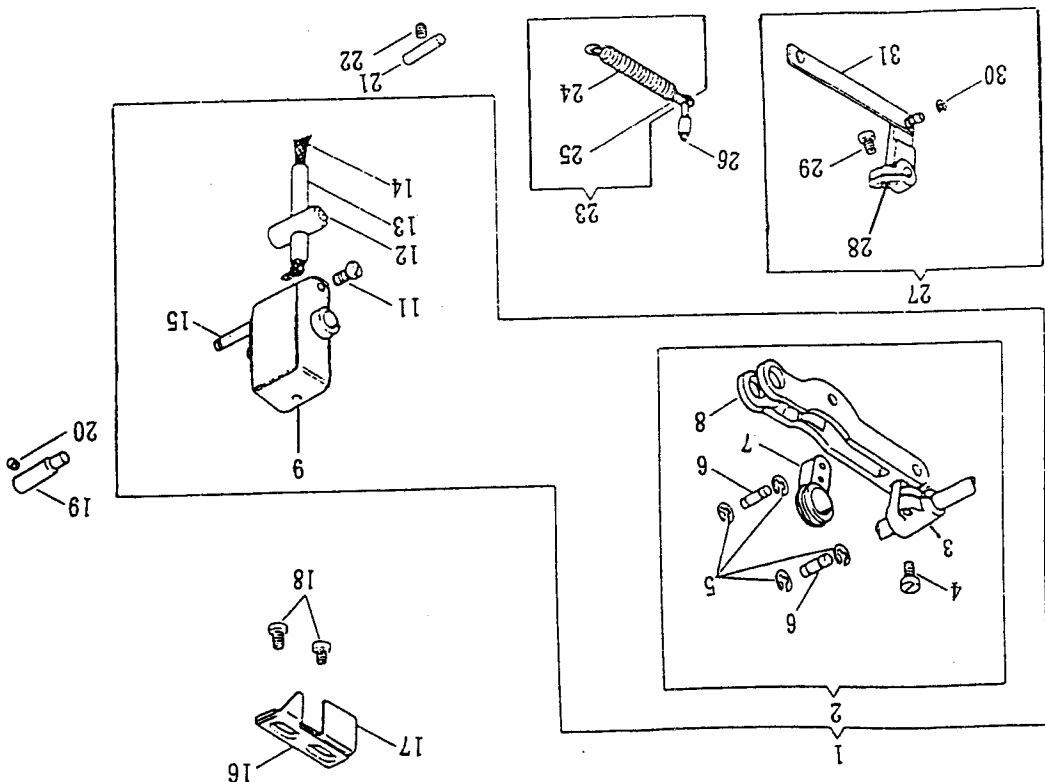


19

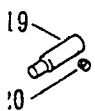
F.9



FEED CONTROL CAM



FEED DRIVING CONNECTION, CARRIER FRAME

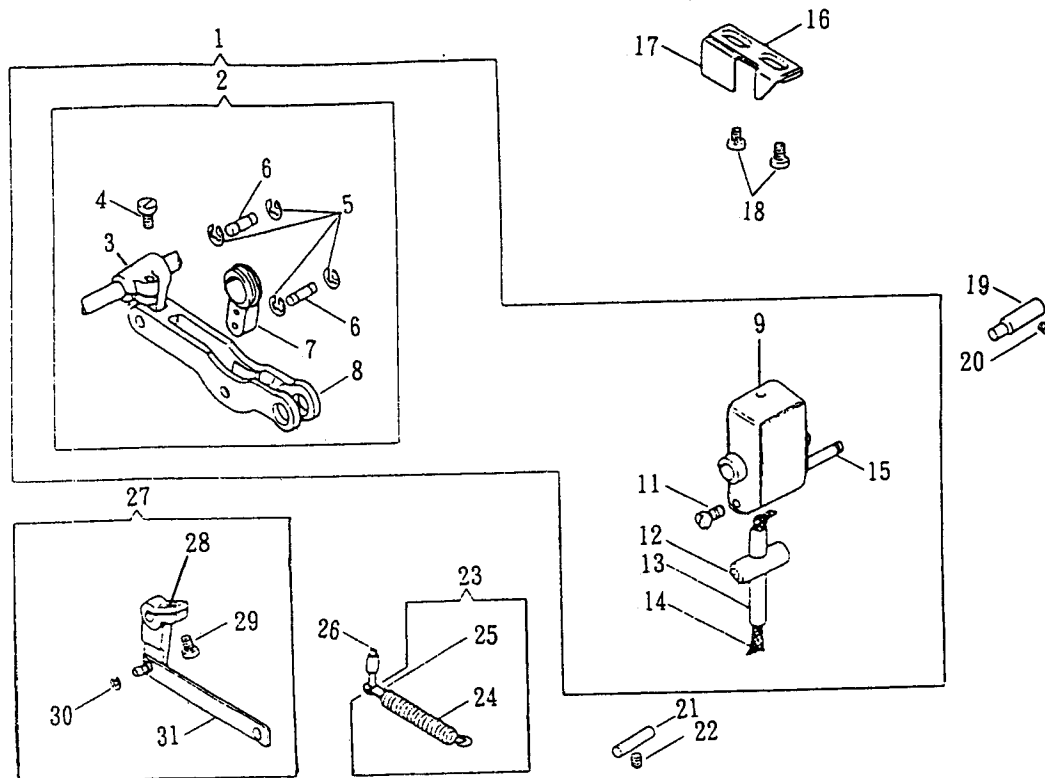


REF. NO	DESCRIPTION	QTY.
F 9 - 01	FEED DRIVING CONN. CARRIER FRAME (CPL.)	
F 9 - 02	FEED DRIVING CONN. (CPL.)	
F 9 - 03	FEED DRIVING CONN. CRANK	
F 9 - 04 P	FEED DRIVING CONN. CRANK PINCH SCREW	
F 9 - 05	FEED DRIVING CONN. LEVER HINGE PIN RETAINER	4
F 9 - 06	FEED DRIVING CONN. LEVER HINGE PIN	2
F 9 - 07	FEED DRIVING CONN. LINK	
F 9 - 08	FEED DRIVING CONN. LEVER	
F 9 - 09	FEED DRIVING CONN. CARRIER FRAME	
F 9 - 11 P	NEEDLE POSITION ADJ. ECC. SCREW	
F 9 - 12	FEED DRIVING CONN. LEVER SLIDE BEARING	
F 9 - 13	FEED DRIVING CONN. CARRIER FRAME SLIDE STUD	
F 9 - 14	FEED DRIVING CONN. OIL WICK	
F 9 - 15	FEED DRIVING CONN. CARRIER FRAME SPRING STUD	
F 9 - 16	FEED DRIVING CONN. CARRIER FRAME STOP (BACK)	
F 9 - 17	FEED DRIVING CONN. CARRIER FRAME STOP (FRONT)	
F 9 - 18 P	FEED DRIVING CONN. CARRIER FRAME STOP SCREW	2
F 9 - 19	FEED DRIVING CONN. BEARING STUD (RIGHT)	
F 9 - 20 P	FEED DRIVING CONN. BEARING STUD SCREW (RIGHT)	
F 9 - 21	FEED DRIVING CONN. BEARING STUD (LEFT)	
F 9 - 22 P	FEED DRIVING CONN. BEARING STUD SCREW (LEFT)	
F 9 - 23	FEED DRIVING CONN. CARRIER FRAME SPRING (CPL.)	
F 9 - 24	FEED DRIVING CONN. CARRIER FRAME SPRING	
F 9 - 25	FEED DRIVING CONN. CARRIER FRAME SPRING RETAINER	
F 9 - 26	FEED DRIVING CONN. CARRIER FRAME SPRING STUD	
F 9 - 27	FEED REGULATING CONN. SHAFT CRANK LINK	
F 9 - 28	FEED REGULATING CONN. SHAFT CRANK LINK (CPL.)	
F 9 - 29 P	FEED REGULATING CONN. SHAFT CRANK PINCH SCREW	
F 9 - 30	FEED REGULATING CONN. RETAINING RING	
F 9 - 31	FEED REGULATING CONN. SHAFT CRANK LINK	
F 9 - 32	FEED CONTROL CAM SHAFT	
F 9 - 33	FEED CONTROL CAM SHAFT OIL WICK	
F 9 - 34	FEED CONTROL CAM MTG. LOCK WASHER	3
F 9 - 35 P	FEED CONTROL CAM MOUNTING BRACKET SCREW	3
F 9 - 36	FEED CONTROL CAM MTG. BRACKET DOWEL PIN	2

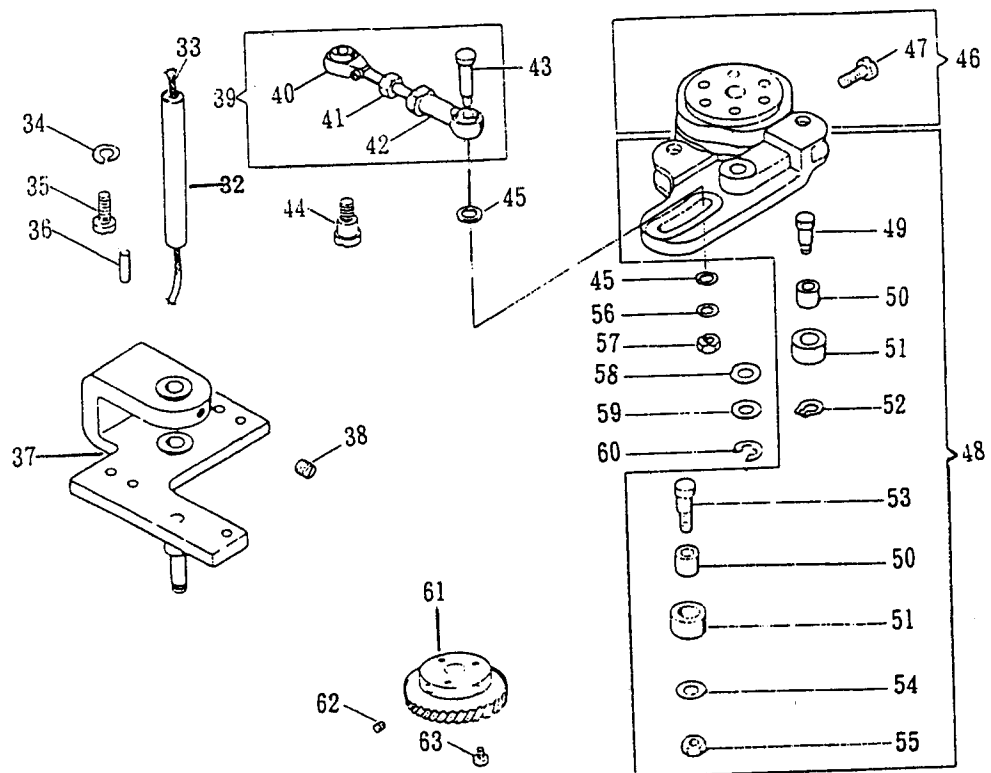
46

48

FEED DRIVING CONNECTION, CARRIER FRAME



FEED CONTROL CAM



REF. NO	DESCRIPTION	QTY.
F 9 - 37	FEED CONTROL CAM MTG. BRACKET	
F 9 - 38 P	FEED CONTROL CAM MTG. BRACKET SET SCREW	
F 9 - 39	FEED CONTROL CONN. (CPL.)	
F 9 - 40	FEED CONTROL CONN. BALL JOINT (MALE)	
F 9 - 41	FEED CONTROL CONN. LOCK NUT	
F 9 - 42	FEED CONTROL CONN. BALL JOINT (FEMALE)	
F 9 - 43	FEED CONTROL CONN. ADJ. SCREW	
F 9 - 44 P	FEED CONTROL CONN. HINGE SCREW	
F 9 - 45	FEED CONTROL CONN. ADJ. SCREW	2
F 9 - 46	FEED CONTROL CAM (CPL.)	
F 9 - 47 P	FEED CONTROL CAM SET SCREW	2
F 9 - 48	FEED CONTROL CAM FOLLOWER (CPL.)	
F 9 - 49	FEED CONTROL CAM FOLLOWER ARM HINGE PIN	
F 9 - 50	FEED CONTROL CAM FOLLOWER ROLLER NEEDLE BEARING	2
F 9 - 51	FEED CONTROL CAM FOLLOWER ROLLER	2
F 9 - 52	FEED CONTROL CAM FOLLOWER ARM PIN RING	
F 9 - 53 P	FEED CONTROL CAM FOLLOWER ARM HINGE SCREW	
F 9 - 54	FEED CONTROL CAM FOLLOWER ARM SPRING WASHER	
F 9 - 55 W	FEED CONTROL CAM FOLLOWER ARM RETAINING NUT	
F 9 - 56	FEED CONTROL CONN. ADJ. WASHER	
F 9 - 57 W	FEED CONTROL CONN. ADJ. SCREW NUT	
F 9 - 58	FEED CONTROL CAM FOLLOWER ARM WASHER	
F 9 - 59	FEED CONTROL CAM FOLLOWER ARM SPRING WASHER	
F 9 - 60	FEED CONTROL CAM FOLLOWER ARM RING	
F 9 - 61	FEED CONTROL CAM SHAFT WHEEL	
F 9 - 62 P	FEED CONTROL CAM SHAFT WHEEL SET SCREW	
F 9 - 63 P	FEED CONTROL CAM SHAFT WHEEL DISC SCREW	3

19

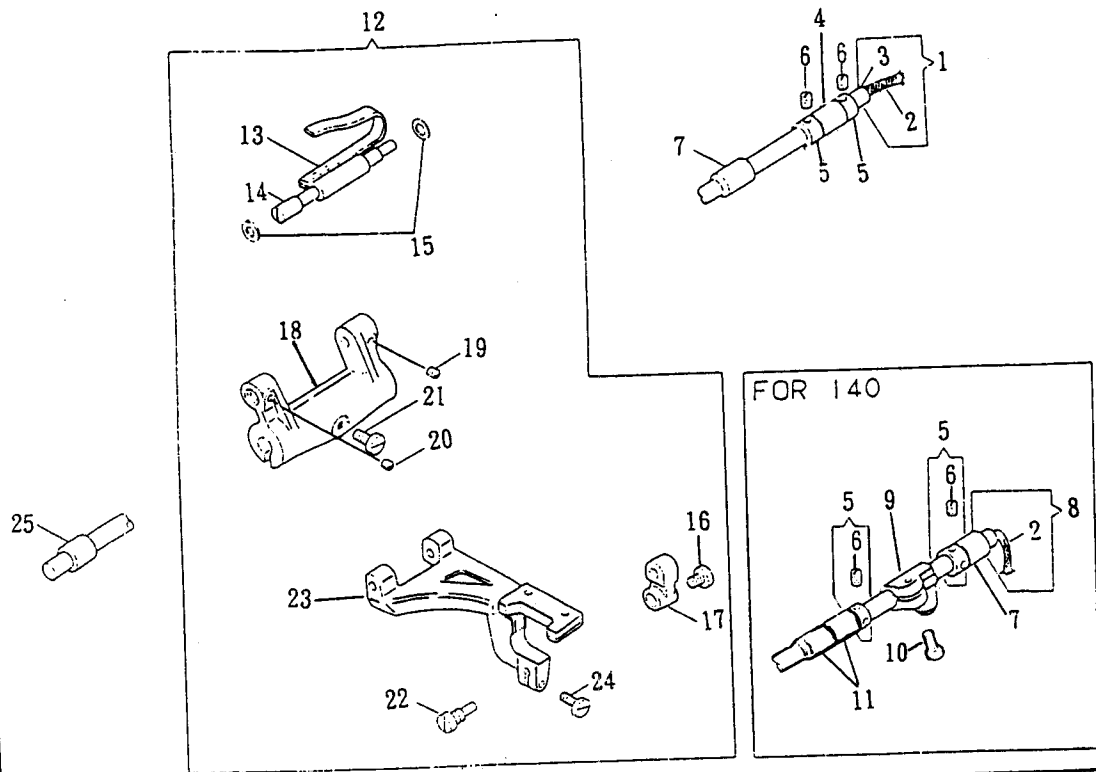
20

47

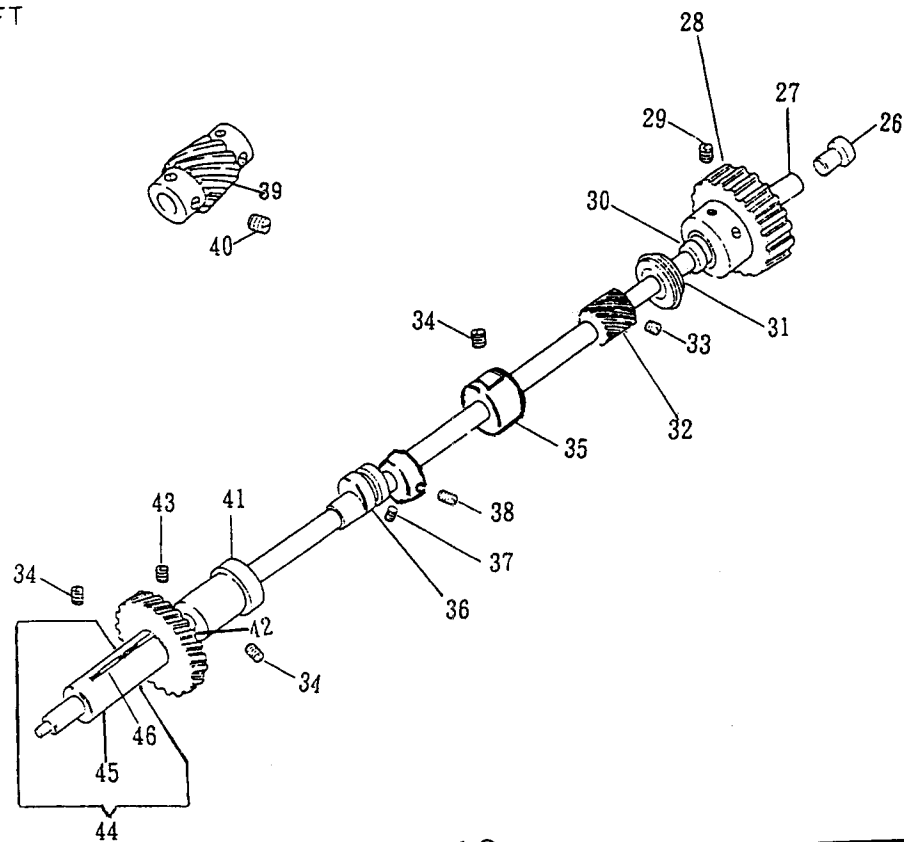
46

48

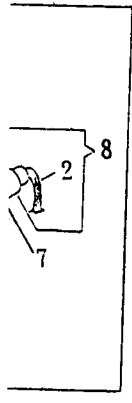
FEED DRIVING ROCK SHAFT CRANK



BED SHAFT

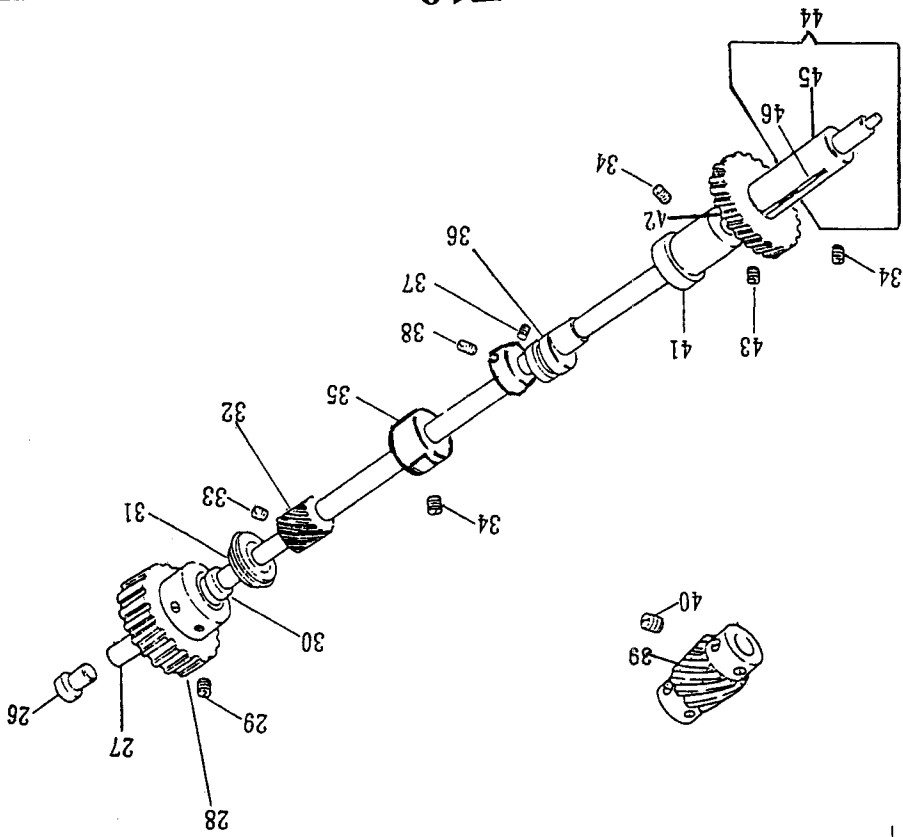


REF. NO	DESCRIPTION	QTY.
10 - 01	FEED DRIVING ROCK SHAFT (CPL.)	
10 - 02	FEED DRIVING ROCK SHAFT OIL WICK	
10 - 03	FEED DRIVING ROCK SHAFT	
10 - 04	FEED DRIVING ROCK SHAFT BUSHING (BACK)	
10 - 05	FEED DRIVING ROCK SHAFT COLLAR (CPL.)	2
10 - 06 P	FEED DRIVING ROCK SHAFT COLLAR SET SCREW	4
10 - 07	FEED DRIVING ROCK SHAFT BUSHING (CENTER)	
10 - 08	FEED DRIVING ROCK SHAFT (CPL.)	
10 - 09	FEED CONTROL CONNECTION CRANK (CPL.)	
10 - 10 P	FEED CONTROL CONNECTION CRANK PINCH SCREW	
10 - 11	FEED DRIVING ROCK SHFT BUSHING (CENTER)	2
10 - 12	FEED DRIVING ROCK SHAFT CRANK (ASS'Y)	
10 - 13	FEED BAR HIGE PIN FELT (CPL.)	
10 - 14	FEED BAR HIGE PIN	
10 - 15	FEED BAR HIGE PIN WASHER	2
10 - 16 P	FEED BAR LIFTING LINK HINGE PIN CAP SCREW	
10 - 17	FEED BAR LIFTING LINK	
10 - 18	FEED DRIVING ROCK SHAFT CRANK	
10 - 19 P	FEED BAR HIGE PIN SET SCREW (LONG)	
10 - 20 P	FEED BAR HIGE PIN SET SCREW (SHORT)	
10 - 21 P	FEED DRIVING ROCK SHAFT CRANK SCREW	
10 - 22 P	FEED BAR LIFTING LINK HINGE PIN	
10 - 23	FEED BAR (CPL.)	
10 - 24 P	FEED BAR LIFTING LINK HING SCREW	
10 - 25	FEED DRIVING ROCK SHAFT BUSHING (FRONT)	
10 - 26	BED SHAFT PLUG	
10 - 27	BED SHAFT	
10 - 28	BED SHAFT CONN. BELT PULLEY (CPL.)	
10 - 29 P	BED SHAFT CONN. BELT PULLEY SHT SCREW	2
10 - 30	BED SHAFT CONN. BELT PULLEY SPACER	
10 - 31	BED SHAFT BALL BEARING	
10 - 32	OIL PUMP DRIVING GEAR (CPL.)	
10 - 33 P	OIL PUMP DRIVING GEAR SCREW	2
10 - 34 P	BED SHAFT BUSHING SET SCREW	3
10 - 35	BED SHAFT BUSHING (BACK)	

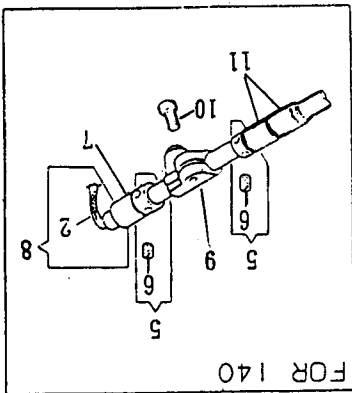


26

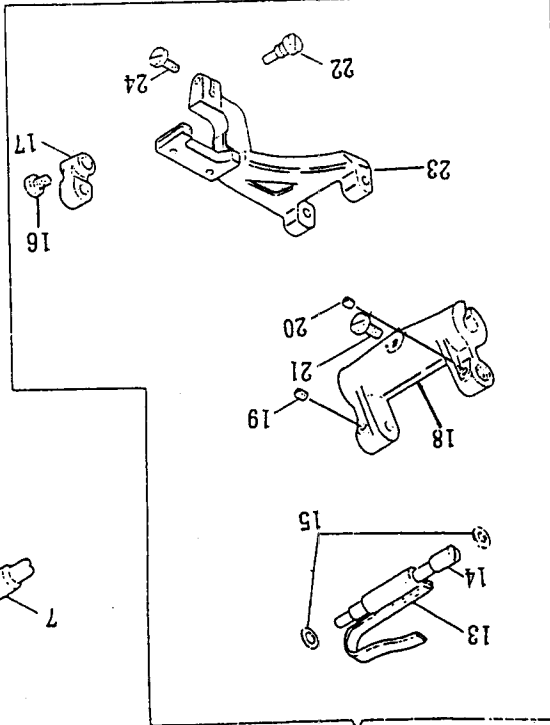
F10



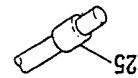
BED SHAFT



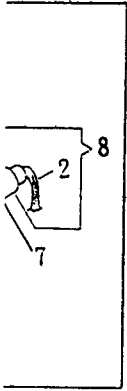
FOR 140



FEED DRIVING ROCK SHAFT CRANK

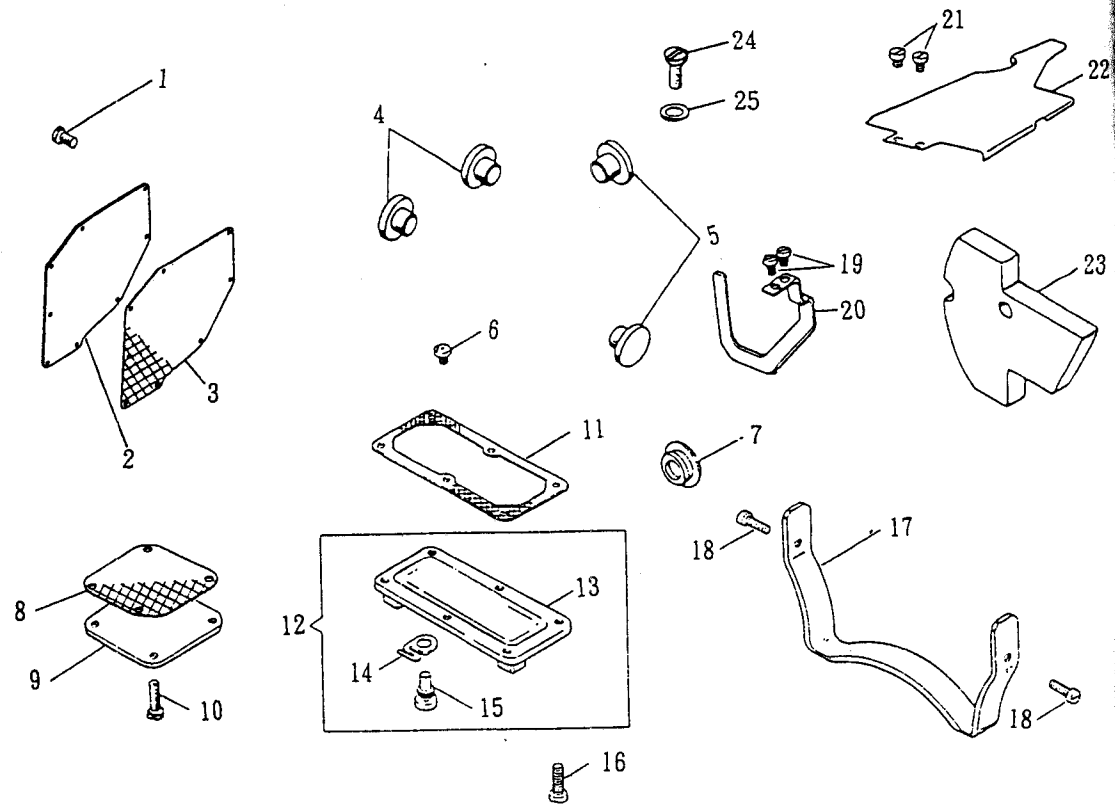


REF. NO	DESCRIPTION	QTY.
10 - 36	FEED DRIVING ECC. (CPL.)	
10 - 37 P	FEED DRIVING ECC. SET SCREW	
10 - 38 P	FEED DRIVING ECC. POSITION SCREW	
10 - 39	BED SHAFT WORM (CPL.)	
10 - 40 P	BED SHAFT WORM SET SCREW	4
10 - 41	BED SHAFT BUSHING (CENTER)	
10 - 42	BED SHAFT GEAR	
10 - 43 P	BED SHAFT GEAR SET SCREW	2
10 - 44	BED SHAFT BUSHING (FRONT)	
10 - 45	BED SHAFT BUSHING (FRONT)	
10 - 46	BED SHAFT BUSHING (FRONT) WICK	

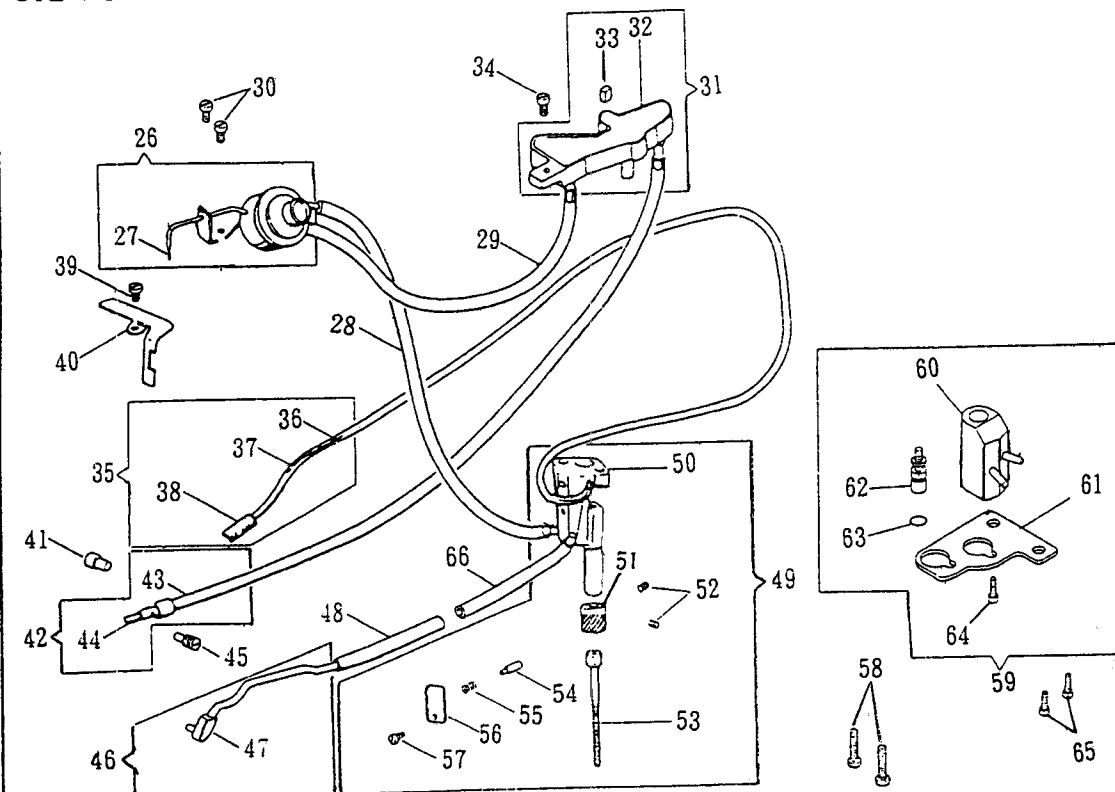


26

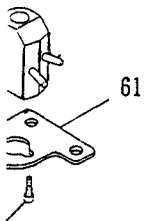
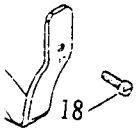
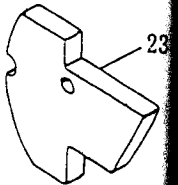
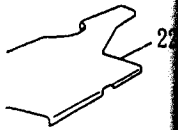
ARM COVER (BACK)



OIL PUMP BODY



21

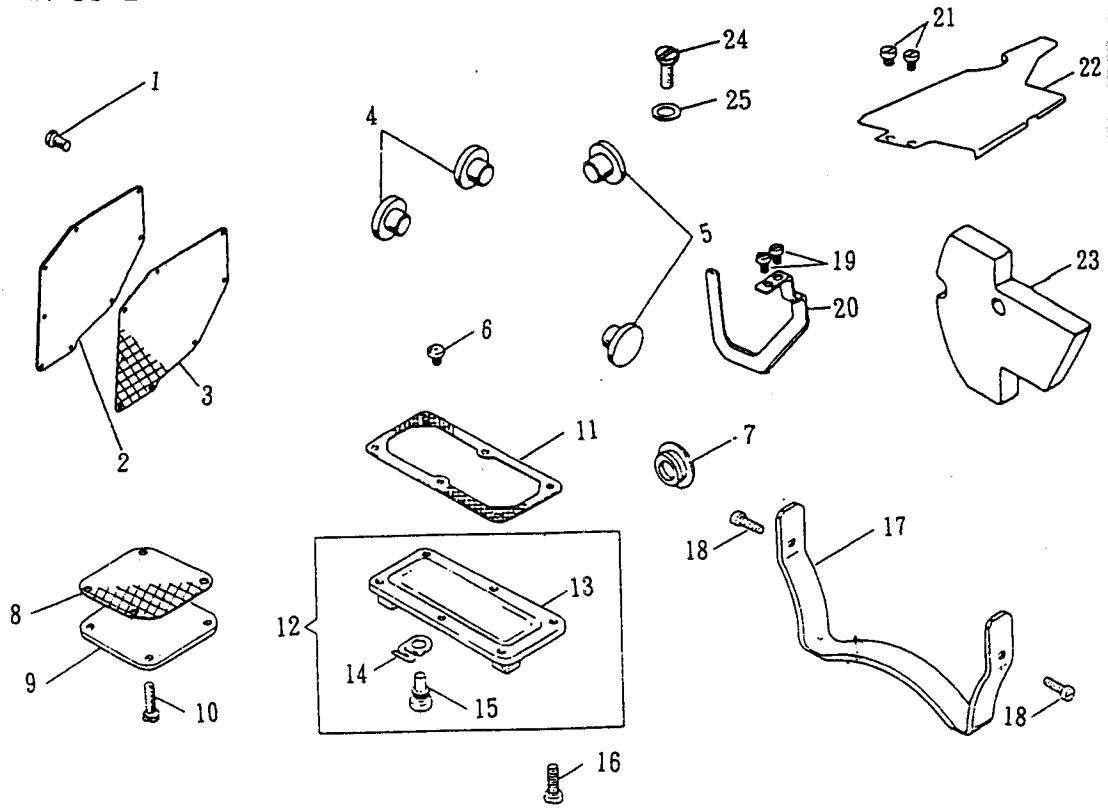


59

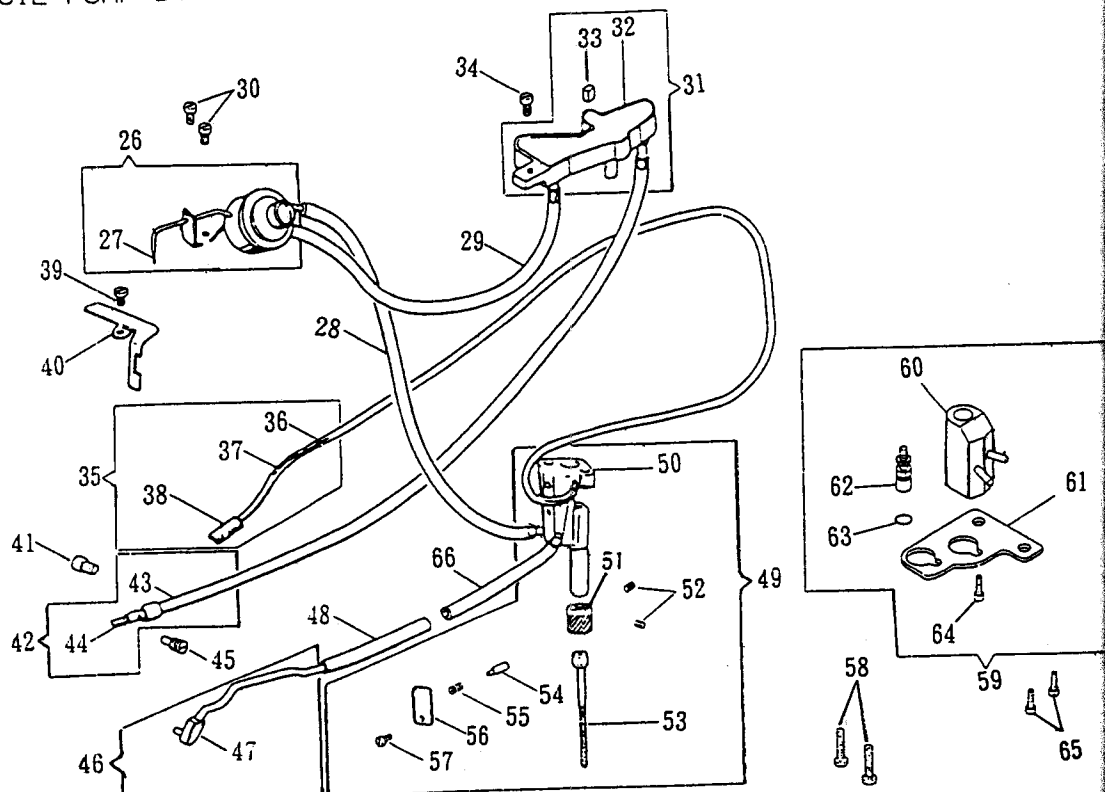


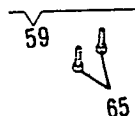
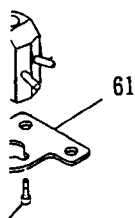
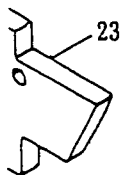
REF. NO	DESCRIPTION	QTY.
11 - 01 P	ARM COVER (BACK) SCREW	8
11 - 02	ARM COVER (BACK), GASKET (CPL.)	
11 - 03	ARM COVER (BACK) GASKET	
11 - 04	BED PLUG (REAR)	2
11 - 05	BED PLUG (FRONT)	2
11 - 06 P	BED PLUG SCREW	
11 - 07	FEED REGULATING SHAFT HOLE PLUG	
11 - 08	HOOK SHAFT GEAR BOX COVER GASKET	
11 - 09	HOOK SHAFT GEAR BOX COVER	
11 - 10 P	HOOK SHAFT GEAR BOX COVER SCREW	4
11 - 11	BED SHAFT GEAR BOX COVER GASKET	
11 - 12	BED SHAFT GEAR BOX COVER (CPL.)	
11 - 13	BED SHAFT GEAR BOX COVER	
11 - 14	FEED BAR HINGE PIN OILING FELT CLAMP	
11 - 15 P	BED SHAFT GEAR BOX COVER DRAIN SCREW	
11 - 16 P	BED SHAFT GEAR BOX COVER SCREW	6
11 - 17	MACHINE LEG	
11 - 18 P	MACHINE LEG SCREW	2
11 - 19 P	ARM OIL SHIELD RETAINER SCREW	2
11 - 20	ARM OIL SHIELD RETAINER	
11 - 21 P	OIL GUARD SCREW	2
11 - 22	OIL GUARD COVER	
11 - 23	ARM OIL SHIELD	
11 - 24 P	EARTH WIRE SCREW	
11 - 25	EARTH WIRE SCREW WASHER	
11 - 26	OIL SIGHT BODY	
11 - 27	OIL SIGHT WICK	
11 - 28	OIL DELIVERY TUBE	
11 - 29	OIL RETURN TUBE UPPER (SHORT)	
11 - 30 P	OIL SIGHT BODY SCREW	2
11 - 31	OIL DISTRIBUTOR PLATE (CPL.)	
11 - 32	OIL DISTRIBUTOR PLATE	
11 - 33	OIL DISTRIBUTOR PLATE FOAM PAD	
11 - 34 P	OIL DISTRIBUTOR PLATE SCREW	
11 - 35	OIL REMOVING TUBE, OIL REMOVING LINT SCREEN	

ARM COVER (BACK)



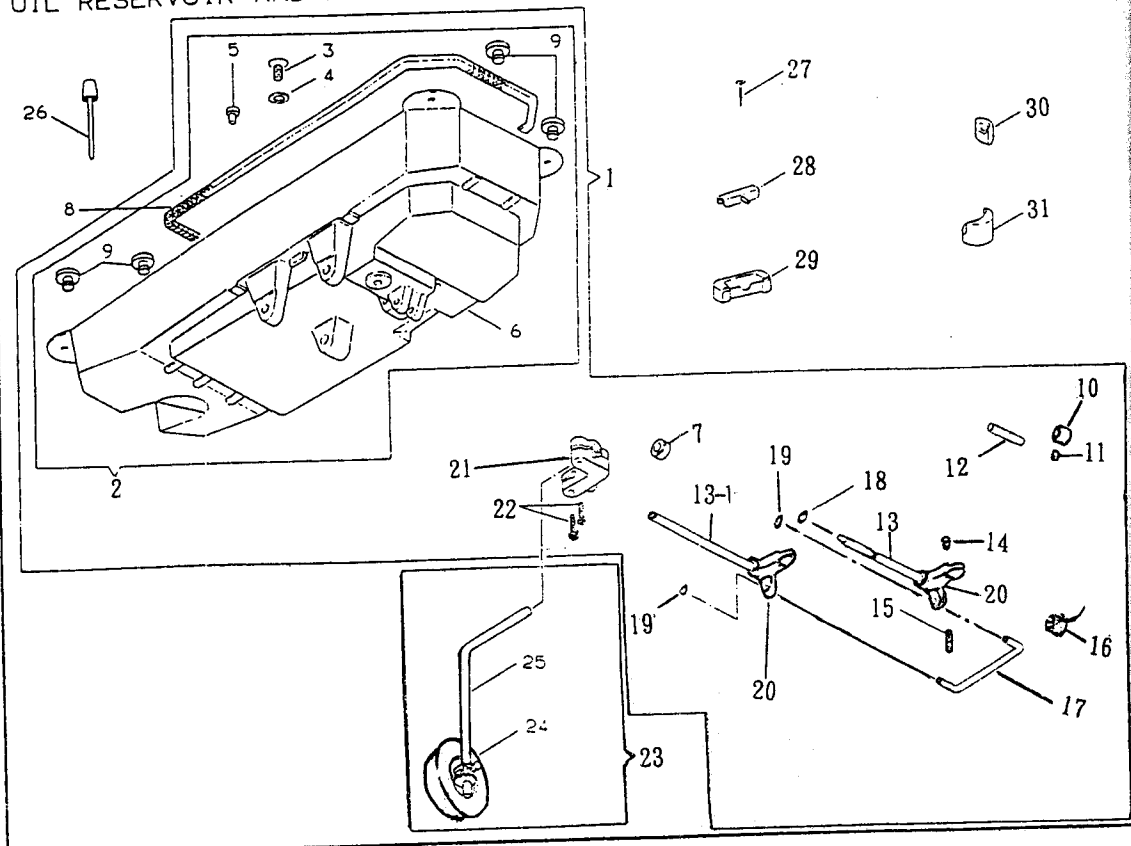
OIL PUMP BODY



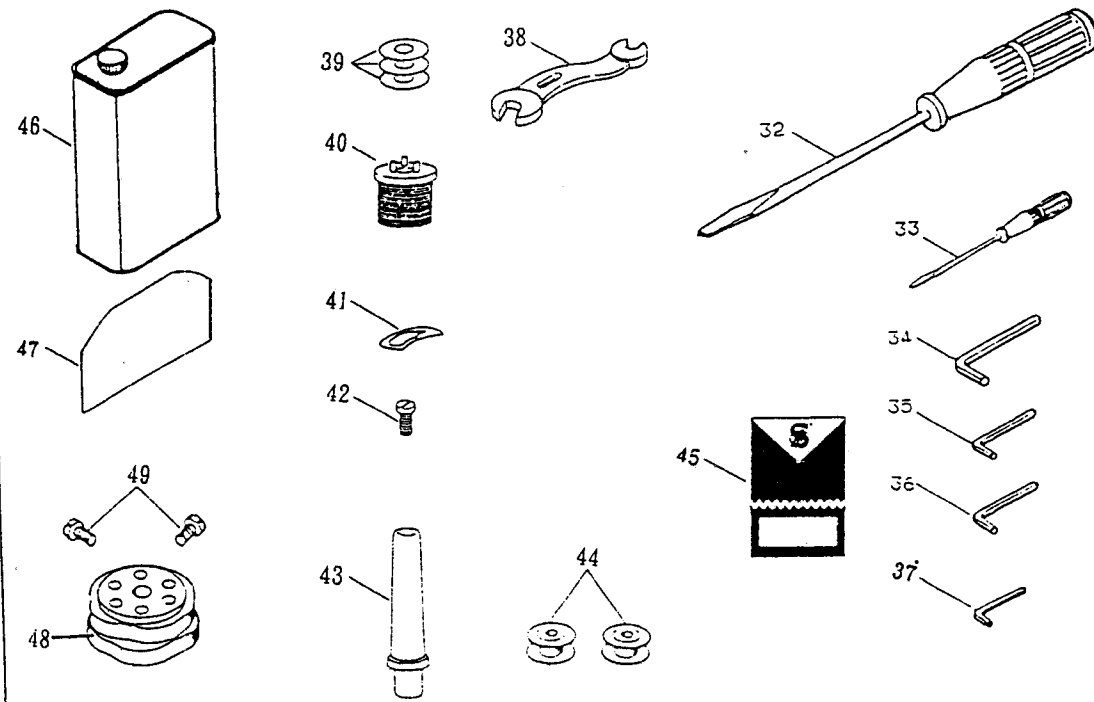


REF. NO	DESCRIPTION	QTY.
11 - 36	OIL REMOVING TUBE (CPL.)	
11 - 37	OIL REMOVING TUBE WIRE	
11 - 38	OIL REMOVING LINT SCREEN	
11 - 39 P	HEAD END OIL DRAIN WICK CLAMP SCREW	
11 - 40	ARM MEAD OIL DRAIN WICK CLAMP (FRONT)	
11 - 41	BED SHAFT BUISHING OIL HOLE PLUG	
11 - 42	OIL RETURN TUBE LOWER (LONG) (CPL.)	
11 - 43	OIL RETURN TUBE LOWER (LONG)	
11 - 44	OIL RETURN TUBE	
11 - 45 P	OIL RETURN TUBE SCREW	
11 - 46	HOOK SHAFT GEAR BOX OIL PIPE (CPL.)	
11 - 47	HOOK SHAFT GEAR BOX OIL PIPE CONNECTOR	
11 - 48	HOOK SHAFT GEAR BOX OIL PIPE TUBE	
11 - 49	OIL PUMP BODY (ASS'Y)	
11 - 50	OIL PUMP BODY	
11 - 51	OIL PUMP GEAR (CPL.)	
11 - 52 P	OIL PUMP GEAR SCREW	2
11 - 53	OIL PUMP SCREW SHAFT	
11 - 54	OIL REMOVING PUMP PISTON	
11 - 55	OIL REMOVING PUMP PISTON SPRING	
11 - 56	OIL REMOVING PUMP PISTON SPRING BRACKET	
11 - 57 P	OIL REMOVING PUMP PISTON SPRING BRACKET SCREW	
11 - 58 P	OIL PUMP MOUNTING SCREW	
11 - 59	HOOK OIL FLOW REGULATING VALVE BRACKET	
11 - 60	HOOK OIL FLOW REGULATING VALVE. PIPE (CPL.)	
11 - 61	HOOK OIL FLOW REGULATING VALVE. BRACKET	
11 - 62	HOOK OIL FLOW REGULATING VALVE	
11 - 63	HOOK OIL FLOW REGULATING VALVE ORING	
11 - 64 P	HOOK OIL FLOW REGULATING VALVE SCREW	
11 - 65 P	HOOK OIL FLOW REGULATING VALVE BRACKET SCREW	
11 - 66	OIL TUBE (FOR OIL REGULATING VALVE)	

OIL RESERVOIR AND KNEE LIFTER

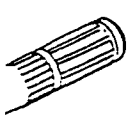
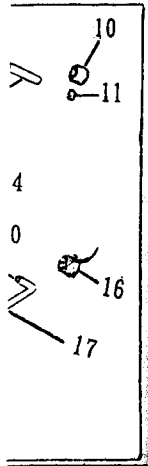


ACCESSORIES



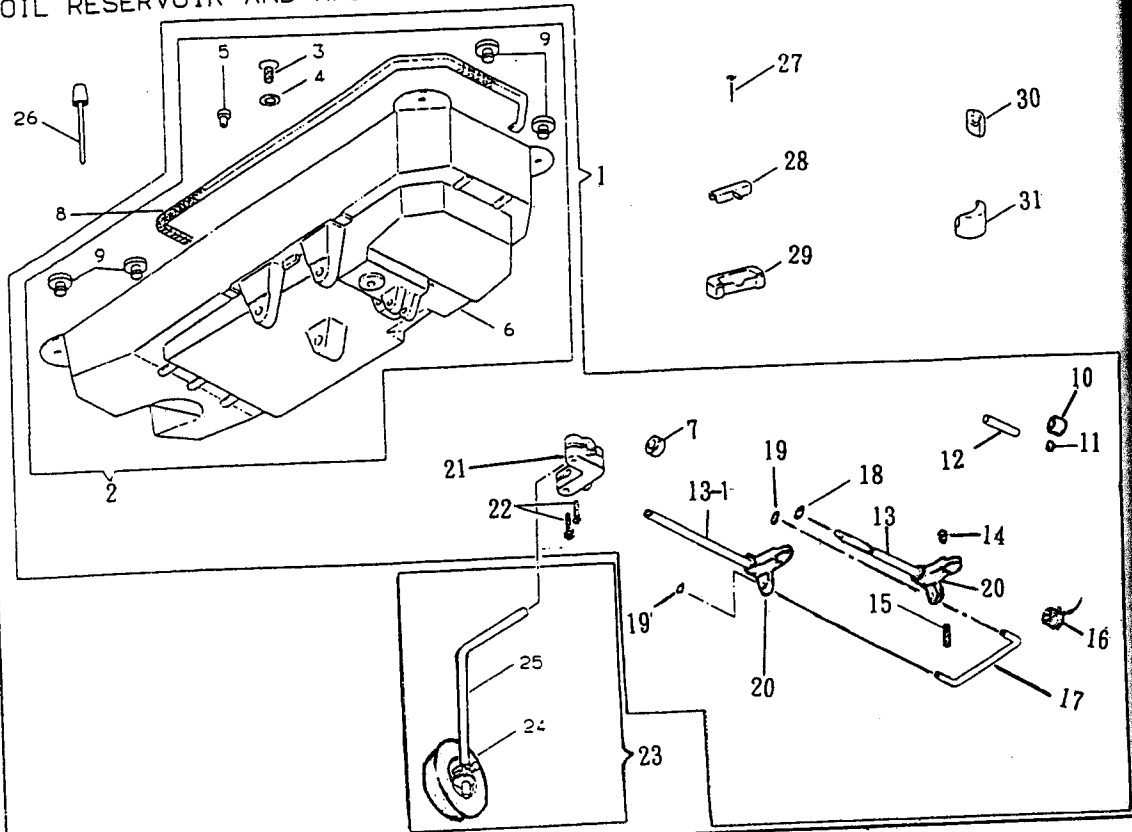
30

31

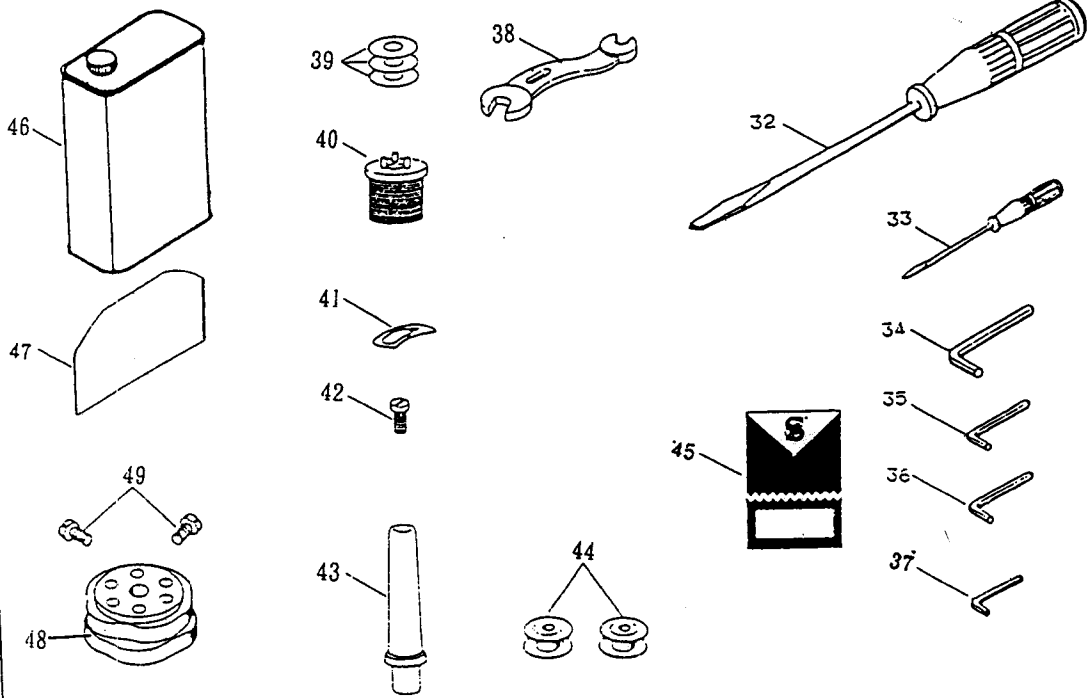


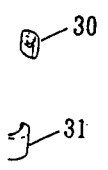
REF. NO	DESCRIPTION	QTY.
F 12 - 01	OIL RESERVOIR AND KNEE LIFTER (ASS'Y)	
F 12 - 02	OIL RESERVOIR (CPL.)	
F 12 - 03 P	OIL RESERVOIR DRAIN PLUG SCREW	
12 - 04	OIL RESERVOIR DRAIN PLUG SCREW GASKET	
12 - 05	FEED REVERSING PLUNGER HOLE PULG	
12 - 06	OIL RESERVOIR	
12 - 07	KNEE LIFTER ROCK SHAFT	
12 - 08	OIL RESERVOIR CUSHION	
12 - 09	MACHINE BASE CUSHION	
12 - 10	FOOT CONTROL REVERSE FEED PIN COLLAR	
12 - 11 P	FOOT CONTROL REVERSE FEED PIN COLLAR SCREW	
12 - 12	FOOT CONTROL REVERSE FEED LEVER PIN	
12 - 13	KNEE LIFTER CONTROL SHAFT	
12 - 13-1	KNEE LIFTER CONTROL SHAFT	
12 - 14 P	KNEE LIFTER CONTROL SHAFT SCREW NUT	
12 - 15 P	KNEE LIFTER CONTROL SHAFT CRANK STOP SCREW	
12 - 16	KNEE LIFTER RETURNING SPRING	
12 - 17	KNEE LIFTER ROCK SHAFT CONNECTION	
12 - 18	KNEE LIFTER CONTROL SHAFT CRIP RING	
12 - 19	KNEE LIFTER ROCK SHAFT CONNECTION CRIP RING	2
12 - 20	KNEE LIFTER ROCK SHAFT	
12 - 21	KNEE LIFTER ROCK SHAFT HIB	
12 - 22 P	KNEE LIFTER ROCK SHAFT HUB PINCH SCREW	2
12 - 23	KNEE LIFTER KNEE PLATE. ARM (CPL.)	
12 - 24	KNEE LIFTER KNEE PLATE (CPL.)	
12 - 25	KNEE LIFTER KNEE PLATE ARM	
12 - 26	KNEE LIFTER PLUNGER	
12 - 27	MACHINE HINGE CONN. CUSHION WIRE NAIL	6
12 - 28	MACHINE HINGE CONN.	2
12 - 29	MACHINE HINGE CONN. CUSHION	2
12 - 30	MACHINE BASE OIL RESSERVOIR CUSHION (BACK)	2
12 - 31	MACHINE BASE OIL RESSERVOIR CUSHION (FRONT)	2
12 - 32	SCREW DRIVER (LARGE)	
12 - 33	SCREW DRIVER (SMALL)	
12 - 34	HEXAGON WRENCH (4mm)	

OIL RESERVOIR AND KNEE LIFTER



ACCESSORIES

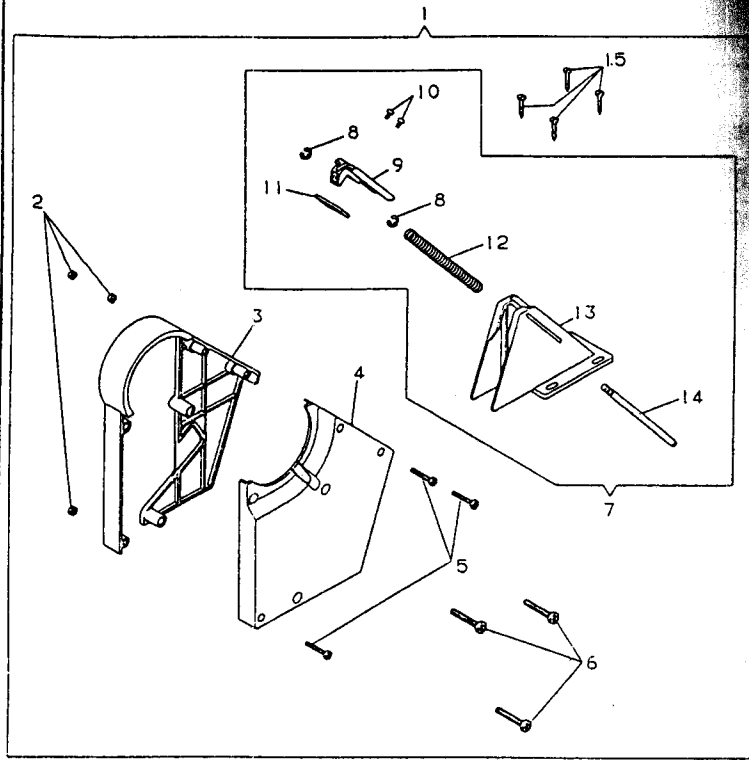




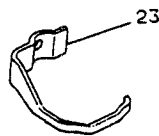
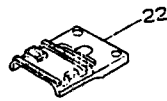
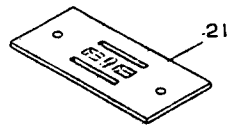
F. NO	DESCRIPTION	QTY.
12 - 35	HEXAGON WRENCH (1/8 INCH)	
12 - 36	HEXAGON WRENCH (3mm)	
12 - 37	HEXAGON WRENCH (2mm)	
12 - 38	WRENCH (3mm)	
F 12 - 39	ANTI-SPLASH PLATE	3
F 12 - 40	OIL FILTER MOUNTING SUPPORT	
F 12 - 41	BORE HOLES DISPIPAGE SPRING	
F 12 - 42 P	ANTI-SPLASH SCREW	
F 12 - 43	RESISTOR	
F 12 - 44	BOLT	2
F 12 - 45	NUT	
F 12 - 46	WASHER	
F 12 - 47	WASHER (EXP.)	
F 12 - 48	WASHER	
F 12 - 49 P	ANTI-SPLASH SET SCREW	2



BELT GUARD, THREAD UNWINDER (2-SPOOL)



OPTION 1



F13

REF. NO	DESCRIPTION	QTY.
F 13 - 01	BELT GUARD (CPL.)	
F 13 - 02 W	BELT GUARD SCREW NUT (M4_	3
F 13 - 03	BELT GUARD (LEFT)	
F 13 - 04	BELT GUARD (RIGHT)	
F 13 - 05 P	BELT GUARD SCREW (M4)	3
F 13 - 06 P	BELT GUARD SCREW (M5)	3
F 13 - 07	BELT GUARD (BACK) (CPL.)	
F 13 - 08	BELT GUARD SLIDE SHAFT SNAP RING	2
F 13 - 09	BELT GUARD SLIDE	
F 13 - 10 P	BELT GUARD SLIDE SCREW	2
F 13 - 11	BELT GUARD SLIDE STOPPER PLATE	
F 13 - 12	BELT GUARD SLIDE SPRING	
F 13 - 13	BELT GUARD (BACK)	
F 13 - 14	BELT GUARD SLIDE SHAFT	
F 13 - 15 P	BELT GUARD (BACK) WOOD SCREW	4
F 13 - 16	THREAD UNWINDER (2-SPOOL) (CPL.)	
F 13 - 17	PRESSER FOOT	
F 13 - 18	PRESSER FOOT	
F 13 - 19	PRESSER FOOT	
F 13 - 20	PRESSER FOOT	
F 13 - 21	THROAT PLATE	
F 13 - 22	FEED DOG	
F 13 - 23	FINGER GUARD	